



3/22 Everist Road OCEAN GROVE, VIC

Brand New 115sqm Warehouse

Located in Ocean Grove's Industrial Estate, surrounded by established businesses, this 115sqm warehouse is brand new and ready for occupation.

Property features include:

- > 8 meter ceilings suitable for a mezzanine floor or tall pallet racking
- > High-clearance roller door (4.5m wide x 5m clearance)
- > Enclosed unisex toilet area with vanity basin
- > Stainless-steel sink and storage drawers and cupboard
- > Wide driveway for easy vehicle access to warehouse

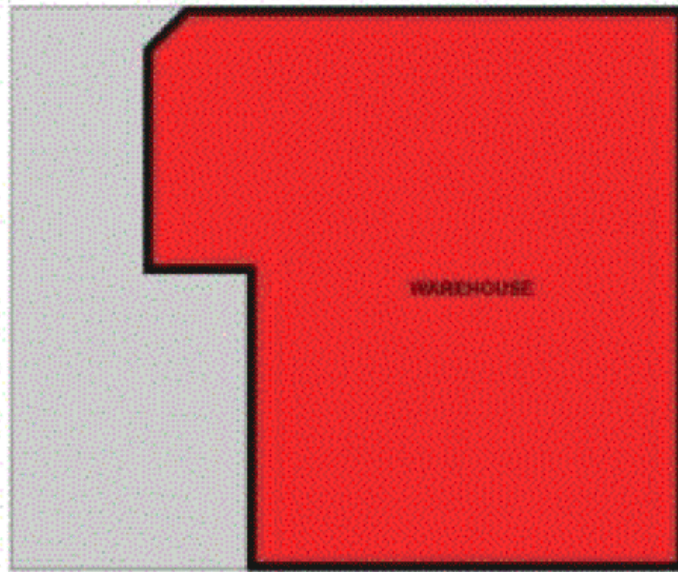
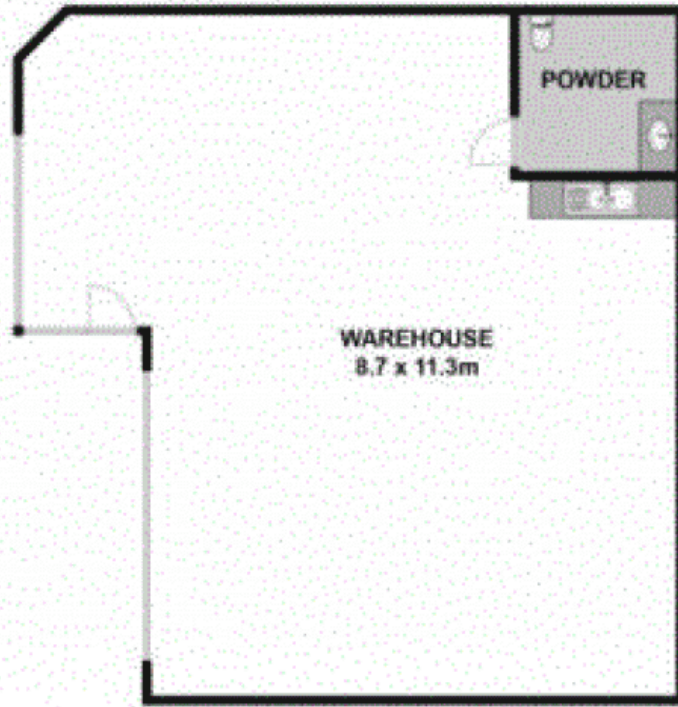
Property Type: Other

HAYDEN

Eli Hayes

0497086523

elih@hayden.com.au



While we make every attempt to ensure the accuracy of the floor plan contained here, measurements are approximate and no responsibility is taken for any errors, omissions, or mis-statements. This plan is for illustrative purposes only.



3/22 Everist Road, Ocean Grove

HAYDEN

3/22 Everist Road

OCEAN GROVE, VIC