



14 Platinum Avenue DRYSDALE, VIC



4



2



2

## Brand New Home in Boutique Development

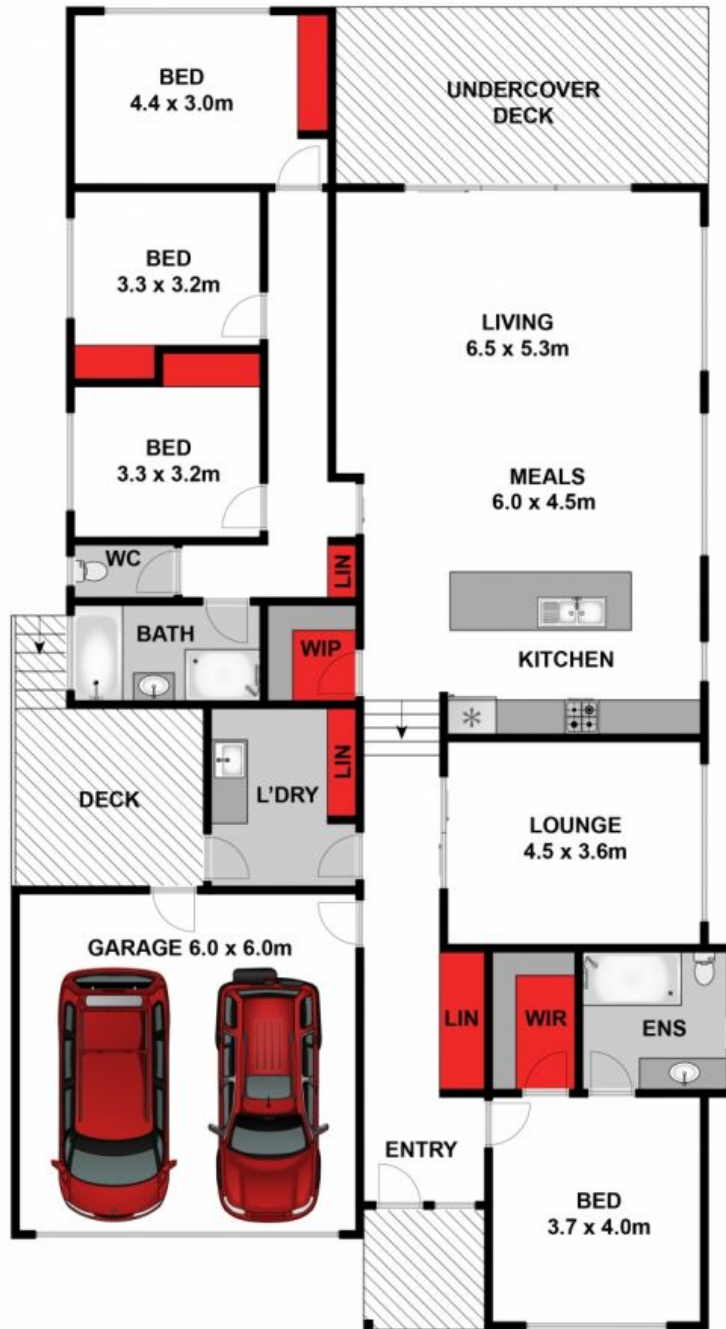
Located in Central Walk Estate, Drysdale's new boutique residential development, this brand new family home offers an enviable, relaxed lifestyle - just 200 metres from the town centre. Working to a contemporary masterplan, the estate incorporates numerous views to nearby hills populated with mature eucalypts, plus a central reserve that features a creek running through stunning wetlands. Everything here looks as fresh as a daisy. Custom designed by a local builder, this quality home sits comfortably on the lower side of elevated Platinum Avenue, with a neat terraced front garden and a double lock-up garage. From the covered portico, a polished-timber passage leads down to the generous open-plan kitchen/dining/lounge area, while along the way is the master bedroom with its walk-in robe and sparkling ensuite, a lounge/entertainment room with double doors, and a laundry equipped with plenty of cupboard space. The kitchen boasts premium appliances including twin Westinghouse electric ovens, a Technika 5-burner gas cooktop, an Omega dishwasher, and island bench with two sinks, and a walk-in pantry. The lounge/dining section opens onto a covered deck that's made for outdoor dining and entertainment. Adjacent to this main living hub are three more bedrooms which share the main bathroom (bath and shower) and a

**Price:** \$630,000 - \$660,000  
**Property Type:** House  
**Land:** 536 m2

# HAYDEN

Hayden Real Estate -

**Ocean Grove**  
 samn@hayden.com.au



Whilst [bwrn.com.au](http://bwrn.com.au) has made every attempt to ensure the accuracy of the floor plan contained here, measurements are approximate and no responsibility is taken for any error, omission, or mis-statement. This plan is for illustrative purposes only.

**14 Platinum Avenue, Drysdale**

**HAYDEN**

**14 Platinum Avenue**

**DRYSDALE, VIC**