



24 Darrambal Crescent LEOPOLD, VIC



4



2



2

A Place To Call Home!

If you're looking for a place to call home, then this immaculate family residence will be at the top of your list!

With Paech Park and public transport just footsteps from your front door, the elements are in place for relaxed family living. Leopold Primary School, Leopold Community Hub, and the Leopold Library are within easy walking distance, while the nearby Bellarine Rail Trail inspires the whole family to enjoy some fresh air. Easy access to the Gateway Plaza and sporting grounds of Leopold Memorial Reserve is the icing on the cake.

The original interiors grant you the option to move straight in or to refresh with a contemporary touch.

Ducted heating, an air conditioner, and ceiling fans keep you in the utmost comfort. Eleven solar panels benefit both the environment and your bank account.

Soaking up the north-western light, the alfresco provides the perfect setting for many lazy weekends or casual gatherings. You'll adore kicking back under the shade of the alfresco

Price: \$480,000 - \$520,000

Property Type: House

Land: 680 m2

HAYDEN

Karen Purcell

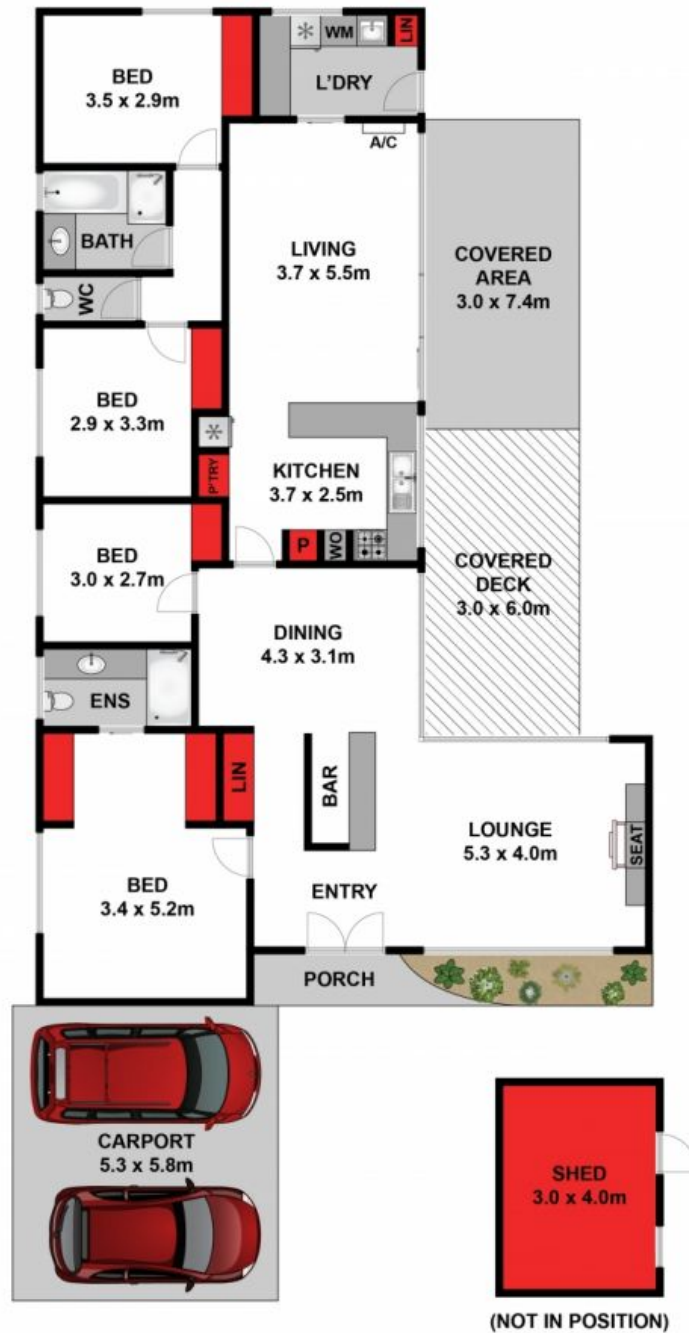
0448510143

karenp@haydenleopold.com.au

Hugh McKewan

0417 538 779

hugh@haydenoceanogrove.com.au



Approx House Area 161m²

Whilst bwrn.com.au has made every attempt to ensure the accuracy of the floor plan contained here, measurements are approximate and no responsibility is taken for any error, omission, or mis-statement. This plan is for illustrative purposes only.



24 Darrambal Crescent, Leopold

HAYDEN

24 Darrambal Crescent

LEOPOLD, VIC