



11 Longview Avenue LEOPOLD, VIC



2



1



2

Potential-Packed Property Upon Approx. 723m2!

Occupying approx. 723m2, this potential-packed property presents a fantastic opportunity for first homebuyers, investors, renovators, and developers alike (STCA)!

Both the front and backyard are wonderfully spacious - providing renovators with infinite possibilities for a home extension or superb outdoor entertaining zone (STCA)!

The double lock-up garage offers secure parking, while the long driveway provides backyard vehicle access ? perfect for those needing to store caravans, boats, or trailers.

Price: \$385,000 - \$420,000

Property Type: House

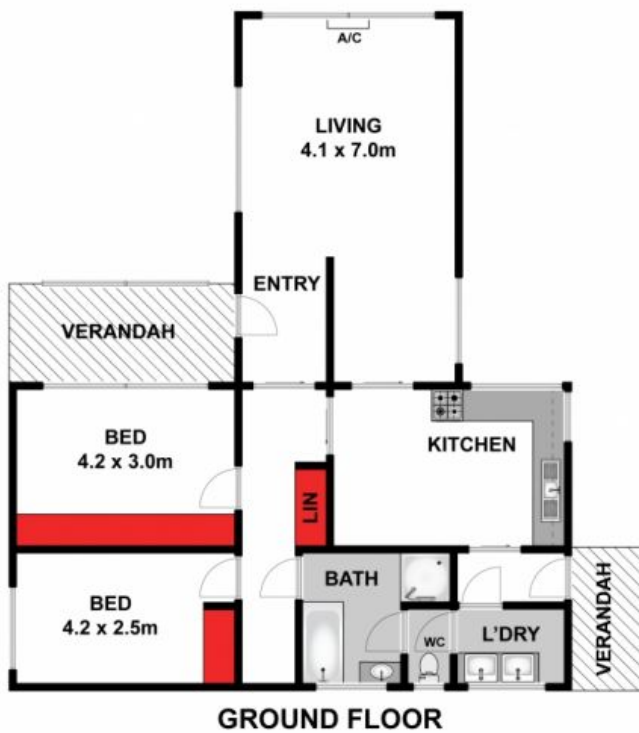
Land: 723 m2

HAYDEN

Karen Purcell

0448510143

karenp@haydenleopold.com.au



(NOT IN POSITION)



Approx House Area 121m²

Whilst bwrn.com.au has made every attempt to ensure the accuracy of the floor plan contained here, measurements are approximate and no responsibility is taken for any error, omission, or mis-statement. This plan is for illustrative purposes only.



11 Longview Avenue, Leopold

HAYDEN

11 Longview Avenue

LEOPOLD, VIC