



11 Longview Avenue LEOPOLD, VIC



2



1



2

## Potential-Packed Property Upon Approx. 723m2!

Occupying approx. 723m2, this potential-packed property presents a fantastic opportunity for first homebuyers, investors, renovators, and developers alike (STCA)!

Both the front and backyard are wonderfully spacious - providing renovators with infinite possibilities for a home extension or superb outdoor entertaining zone (STCA)!

The double lock-up garage offers secure parking, while the long driveway provides backyard vehicle access ? perfect for those needing to store caravans, boats, or trailers.

**Price:** \$385,000 - \$420,000

**Property Type:** House

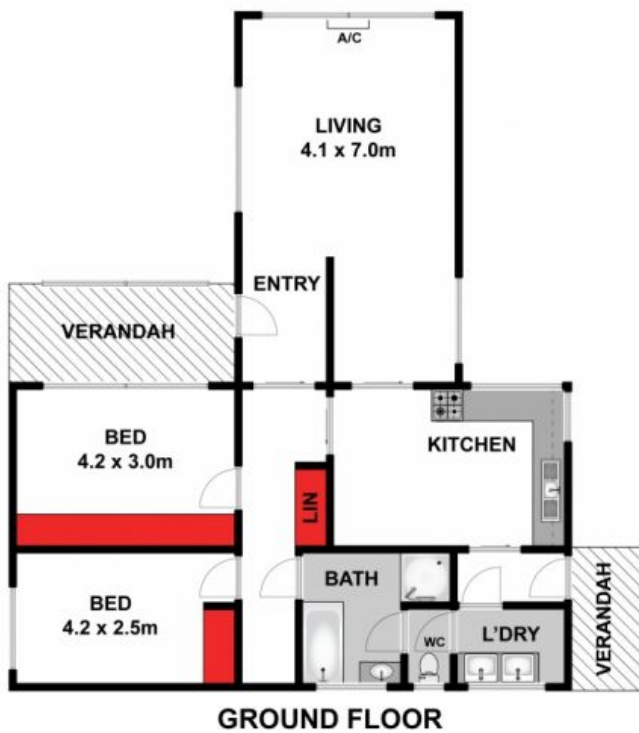
**Land:** 723 m2

# HAYDEN

**Karen Purcell**

0448510143

karenp@haydenleopold.com.au



(NOT IN POSITION)



Approx House Area 121m<sup>2</sup>

Whilst [bwrn.com.au](http://bwrn.com.au) has made every attempt to ensure the accuracy of the floor plan contained here, measurements are approximate and no responsibility is taken for any error, omission, or mis-statement. This plan is for illustrative purposes only.



**11 Longview Avenue, Leopold**

**HAYDEN**

**11 Longview Avenue**

**LEOPOLD, VIC**