



14 Shoaling Drive LEOPOLD, VIC



4



2



2

Spacious Living A Short Stroll From The Playground!

Offering spacious living in a superb location, this home presents a terrific choice for first homebuyers, investors, and families alike!

The generous lounge is great for children or teenagers who enjoy their own space.

Zoned to the front of the home, the Master Bedroom boasts a walk-in robe and en suite with shower, single vanity, and toilet. Three additional bedrooms are complete with built-in robes. The main bathroom, laundry with storage, separate toilet, and walk-in linen press are tucked away in a separate wing.

Ducted heating and evaporative cooling keep you in the utmost comfort.

If you're looking for spacious living, then this home is the one for you! Inspect ASAP!

Price: \$510,000 - \$560,000

Property Type: House

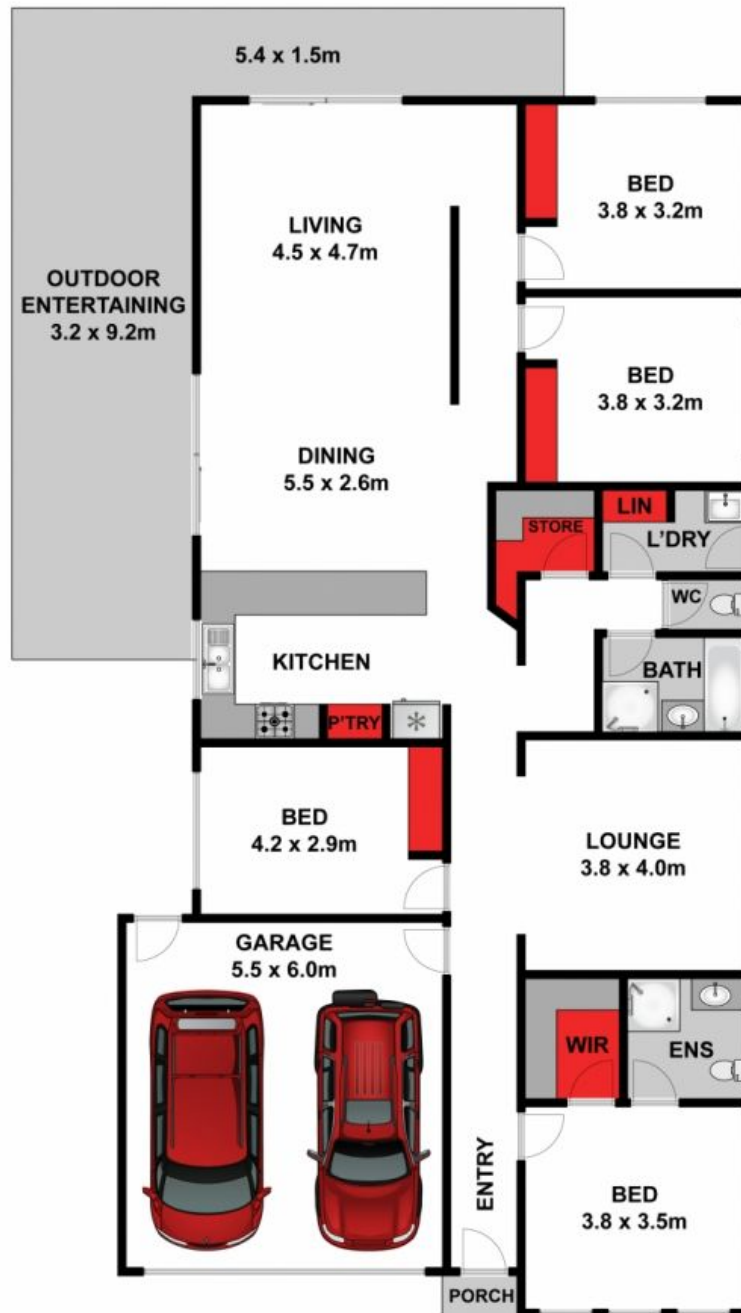
Land: 512 m2

HAYDEN

Karen Purcell

0448510143

karenp@haydenleopold.com.au



Approx House Area 207m²

Whilst bwrn.com.au has made every attempt to ensure the accuracy of the floor plan contained here, measurements are approximate and no responsibility is taken for any error, omission, or mis-statement. This plan is for illustrative purposes only.



14 Shoaling Drive, Leopold

HAYDEN

14 Shoaling Drive

LEOPOLD, VIC