



9 Barimba Court LEOPOLD, VIC



2



1



3

## Cherished Home Awaiting Its Next Chapter!

Occupying approx. 909m<sup>2</sup>, this property presents buyers with a world of opportunities! Move straight in, renovate to create your dream family home, or use the expansive land size for development (STCA)!

It's easy to see that this home has been cherished over the years, with the original interiors and hardwood floors in immaculate condition. The lounge/dining area features a bay window overlooking the front garden, while French doors open onto the north-facing carport. Renovators will instantly see the appeal in transforming this outdoor zone into a leafy alfresco (STCA).

The kitchen is well equipped with a built-in pantry, wall oven, and 900mm stainless steel gas hob and rangehood.

A gas wall heater provides comfort.

**Price:** \$450,000 - \$490,000

**Property Type:** House

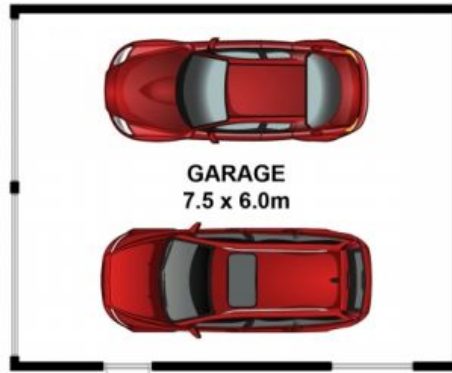
**Land:** 909 m<sup>2</sup>

# HAYDEN

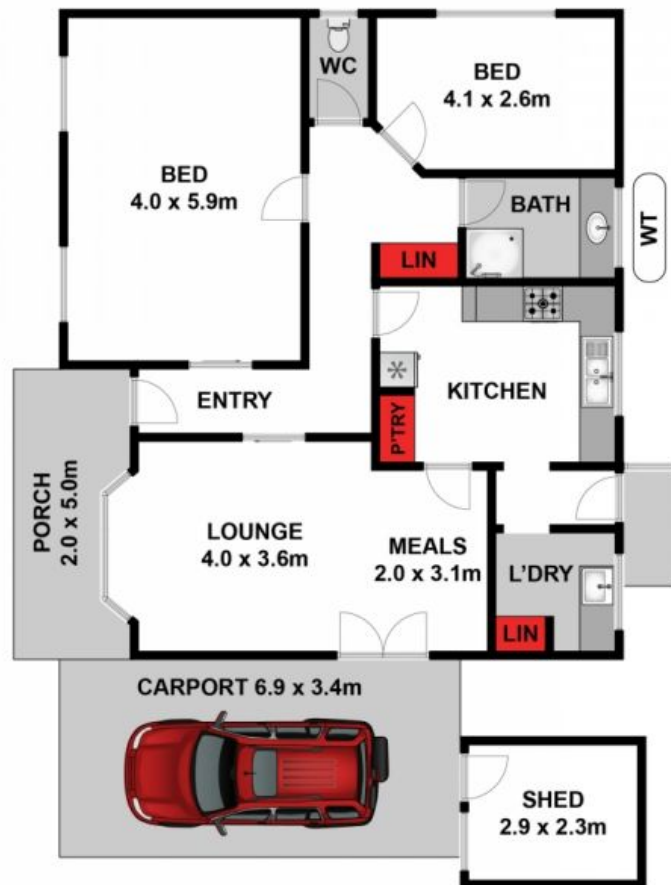
**Karen Purcell**

0448510143

karenp@haydenleopold.com.au



(NOT IN PLACE)



Approx House Area 100m<sup>2</sup>

Whilst [bwrn.com.au](http://bwrn.com.au) has made every attempt to ensure the accuracy of the floor plan contained here, measurements are approximate and no responsibility is taken for any error, omission, or mis-statement. This plan is for illustrative purposes only.

**9 Barimba Court, Leopold**

**HAYDEN**

**9 Barimba Court**

**LEOPOLD, VIC**