



232 Great Ocean Road ANGLESEA, VIC



3



2



2

Two Lot Subdivision - Twice The Potential And Promise

Beach side of the Great Ocean Road, this subdivided Point Roadknight property is one of the last of its kind and it is all ready to go. Just a short stroll to O'Donohue's Beach and with blue water views, the potential to create two stunning contemporary homes is all here. Currently offered with the original home on the street front allotment and a vacant rear block, both sites are substantial at 800sqm (approx) each.

The vacant lot is level with easy site access and provides the perfect blank canvas ready and waiting for its promise to be realised.

Price: \$1,500,000 - \$1,550,000
Property Type: House
Land: 1735 m2

HAYDEN

Hayden Real Estate **Bryan Hayden**

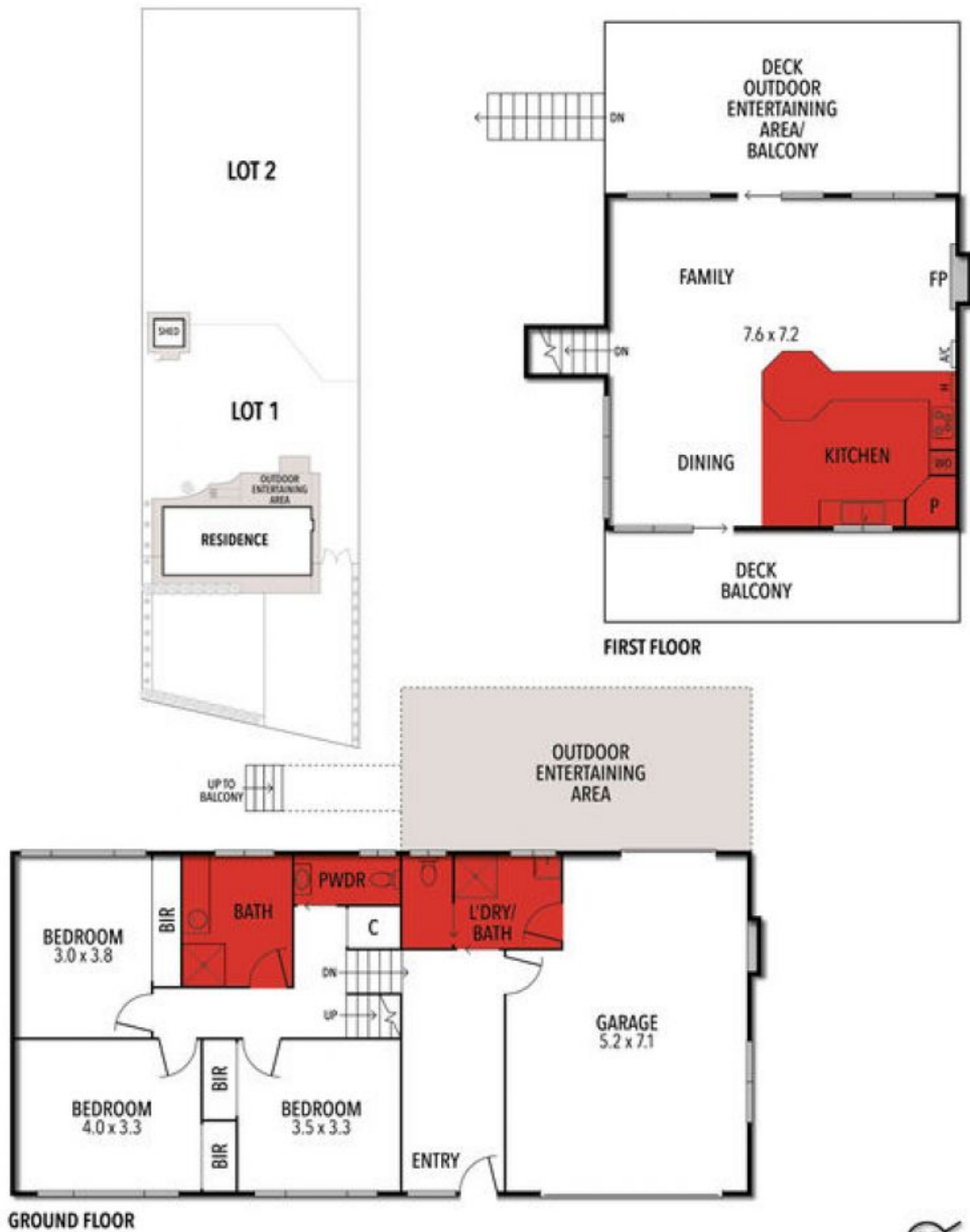
0417613250

Anglesea

samh@hayden.com.au

bryanh@hayden.com.au

232 GREAT OCEAN ROAD, ANGLESEA



THE ABOVE PLAN IS AN ARTIST'S IMPRESSION ONLY, IT INCLUDES ELEMENTS THAT ARE FOR DISPLAY PURPOSES ONLY AND MAY NOT BE TO SCALE. LANDSCAPING SHOWN IS INDICATIVE ONLY. DIMENSIONS ARE APPROXIMATE.