



141 Beacon Point Road CLIFTON SPRINGS, VIC



3



1



2

Easy Living Upon Approx. 671m2!

Set upon approx. 671m2, this home presents a terrific opportunity for first homebuyers, families, investors, and renovators alike (STCA)! Positioned within easy reach of all that Clifton Springs and Drysdale has to offer, a laidback lifestyle is yours to keep!

The original interiors grant you the option to move straight in or to rejuvenate with a contemporary touch (STCA). The light-filled lounge creates the perfect spot to pop up your feet and relax, while the kitchen/meals zone flows outside. The kitchen is well equipped with a built-in pantry, oven, gas hob, and rangehood.

All three bedrooms feature built-in robes and share close access to the bathroom and separate toilet. The laundry is complete with external access.

Two gas wall heaters and ceiling fans provide comfort.

The secure backyard provides a generous play space for children. Its size also offers the potential for buyers to create a superb outdoor entertaining area or to extend the home (S)

Price: \$420,000 - \$450,000

Property Type: House

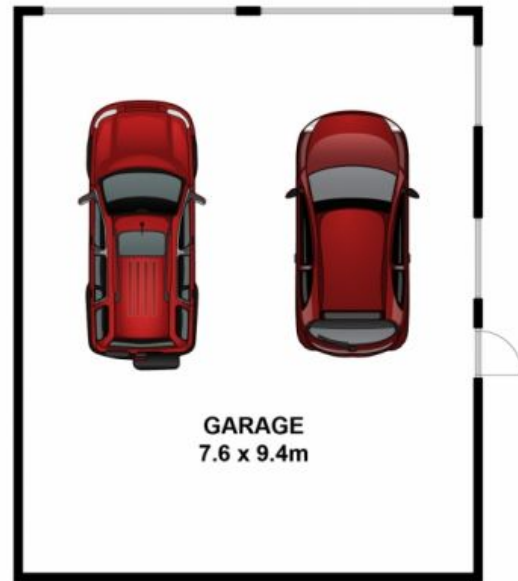
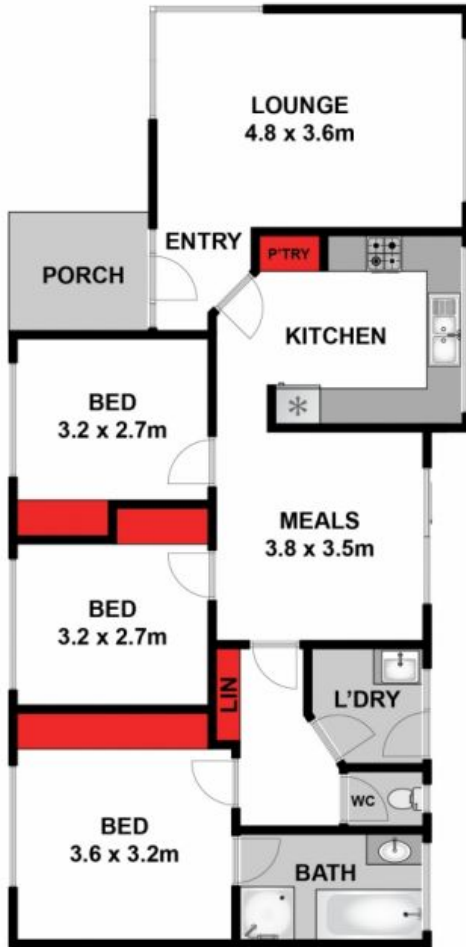
Land: 671 m2

HAYDEN

Karen Purcell

0448510143

karenp@haydenleopold.com.au



(NOT IN PLACE)

Approx House Area 102m²

Whilst bwrn.com.au has made every attempt to ensure the accuracy of the floor plan contained here, measurements are approximate and no responsibility is taken for any error, omission, or mis-statement. This plan is for illustrative purposes only.

141 Beacon Point Road, Clifton Springs

HAYDEN

141 Beacon Point Road

CLIFTON SPRINGS, VIC