



DISCLAIMER: This drawing is indicative only & all measurements are approximate.



38 Beacon Point Road CLIFTON SPRINGS, VIC



3



2



1

## As Pretty As A Picture!

Surrounded by picturesque gardens and showcasing north-facing bay views, this home is an absolute treat!

Every inch of this two-storey weatherboard home is as cute as a button. Upstairs is home to the open plan living/dining/kitchen zone, which is flooded with natural light and features a pitched timber ceiling. Opening onto the north-facing balcony, you'll love admiring the views over the sparkling bay waters towards the You Yangs. The kitchen features a breakfast bar, built-in pantry and appliances (dishwasher, oven, gas hob, 900mm stainless steel rangehood).

Three bedrooms with built-in robes (one with external access) occupy the lower level, along with the fresh main bathroom and laundry with external access.

Complete with a brand new en suite, the spacious family room offers immense versatility as a teen retreat or games room. Boasting separate access, this room is also ideal as a bedroom for those who enjoy their independence. Ducted heating, a split-system air conditioner

**Price:** \$490,000 - \$520,000

**Property Type:** House

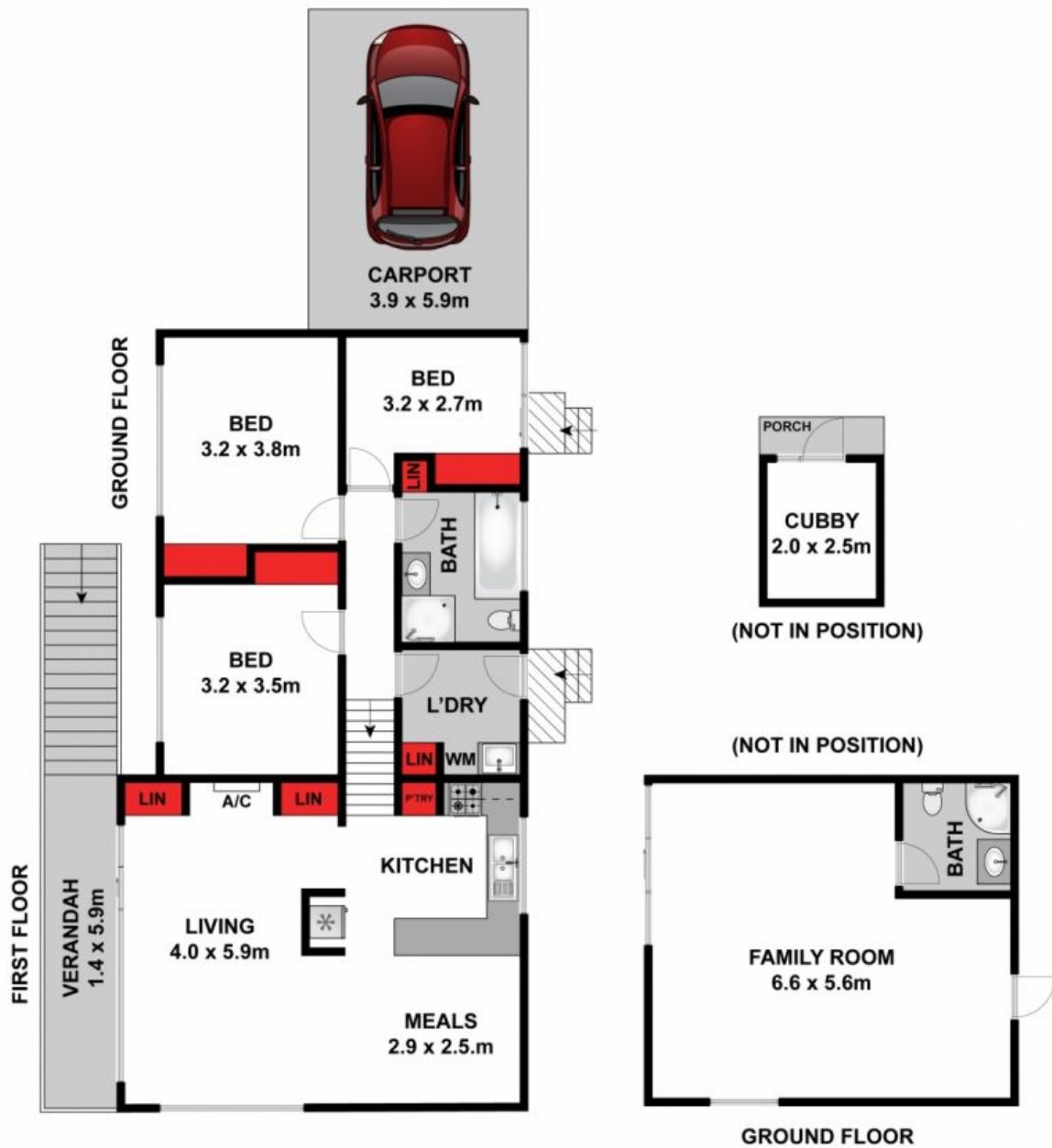
**Land:** 604 m2

# HAYDEN

**Karen Purcell**

0448510143

karenp@haydenleopold.com.au



Approx House Area 100m<sup>2</sup>

Whilst [bwrn.com.au](http://bwrn.com.au) has made every attempt to ensure the accuracy of the floor plan contained here, measurements are approximate and no responsibility is taken for any error, omission, or mis-statement. This plan is for illustrative purposes only.

**38 Beacon Point Road, Clifton Springs**

**HAYDEN**

**38 Beacon Point Road**

**CLIFTON SPRINGS, VIC**