



33 St Andrews Drive JAN JUC, VIC



Jan Juc Surprise Package

This is clever. Designed to maximise both the spectacular ocean outlook and a northerly orientation, this home delivers superb liveability in a prime Jan Juc location.

The light filled open plan living, meals and kitchen area feels spacious and is perfectly set up for easy entertaining and every day effortlessness. White water views and rolling bush-clad hills are on display and can even be enjoyed while working in the well-appointed kitchen. The tasteful neutral d?cor provides a blank canvas ready for you to add your own personal style.

Price: Contact Agent
Property Type: House
Land: 668 m2

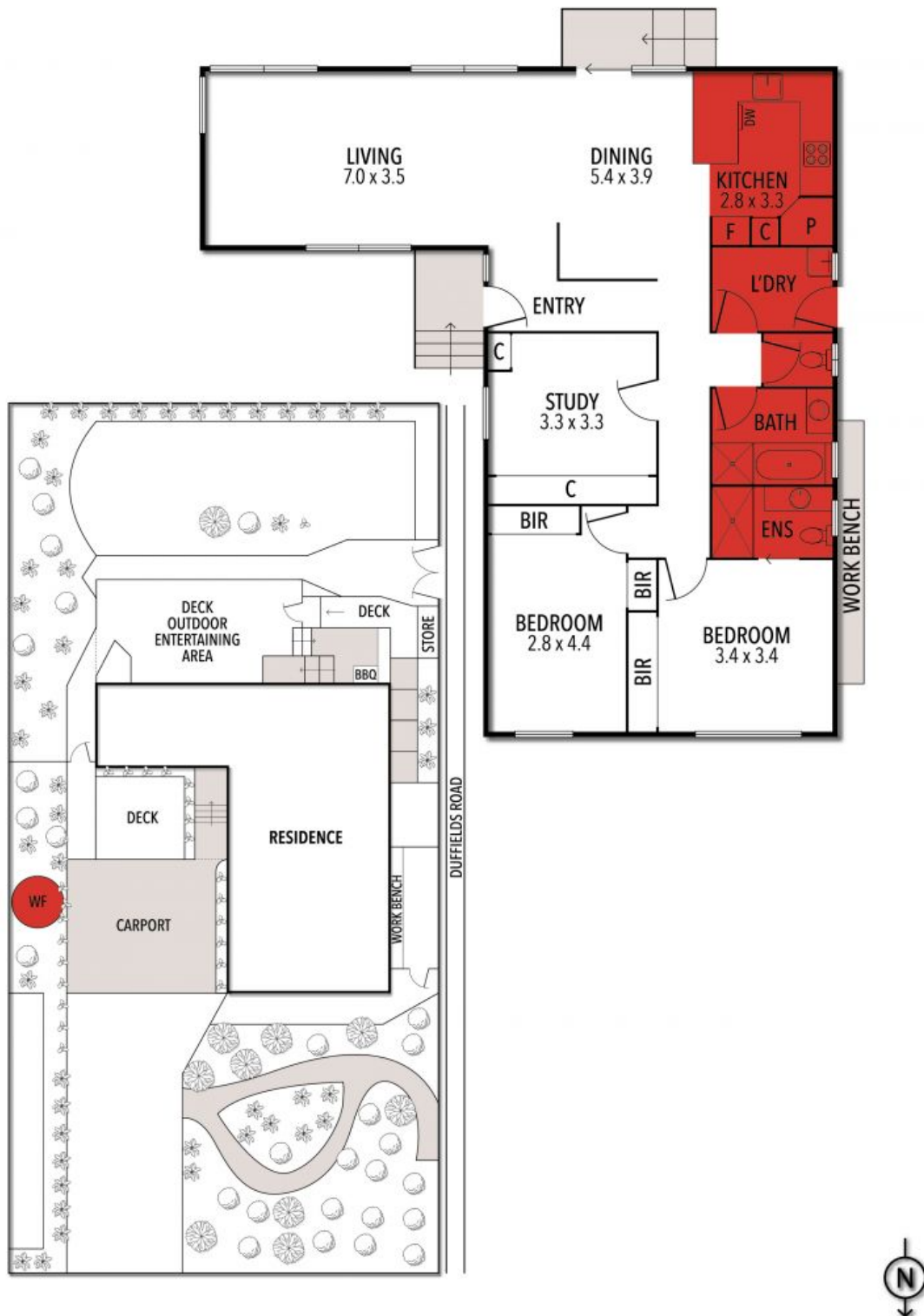
HAYDEN

Hayden Real Estate -

Torquay

samh@hayden.com.au

33 ST ANDREWS DRIVE, JAN JUC



THE ABOVE PLAN IS AN ARTIST'S IMPRESSION ONLY, IT INCLUDES ELEMENTS THAT ARE FOR DISPLAY PURPOSES ONLY AND MAY NOT BE TO SCALE. LANDSCAPING SHOWN IS INDICATIVE ONLY. DIMENSIONS ARE APPROXIMATE.