



58 Janelle Way OCEAN GROVE, VIC



4



2



2

Modern, Coastal and Functional Living

A perfect mixture of modern, coastal and functional living. Perfect for families, this stylish 4 bedroom property emits a relaxing and welcoming vibe. Built just over 12 months ago, the immaculately presented north facing home is located in the popular Kingston Estate, and is just minutes from the newly opened shopping village. Light and bright with neutral tones throughout, the open plan design features 2 separate living areas, creating excellent formal and casual zones or that sought after second space for kids. The kitchen features a large walk in pantry, generous bench space and 900mm oven/stove stop, making it the perfect space for entertaining and family! The 4 spacious bedrooms all have built -in-robos including the sun drenched master bedroom with walk in robe and ensuite with double vanity. The open plan living area flows off the kitchen and onto an alfresco area, looking out onto the rear garden which has plenty of room for the 4 legged friends or backyard cricket. The house is strategically placed on the block allowing side access through double gates for the boat/trailer or caravan. Other notable features include ducted heating and cooling for year round comfort, remote DLUG, block out blinds and TV points in all rooms. Walking tracks and bike paths are close by and the spectacular Ocean Grove beaches and sporting pr

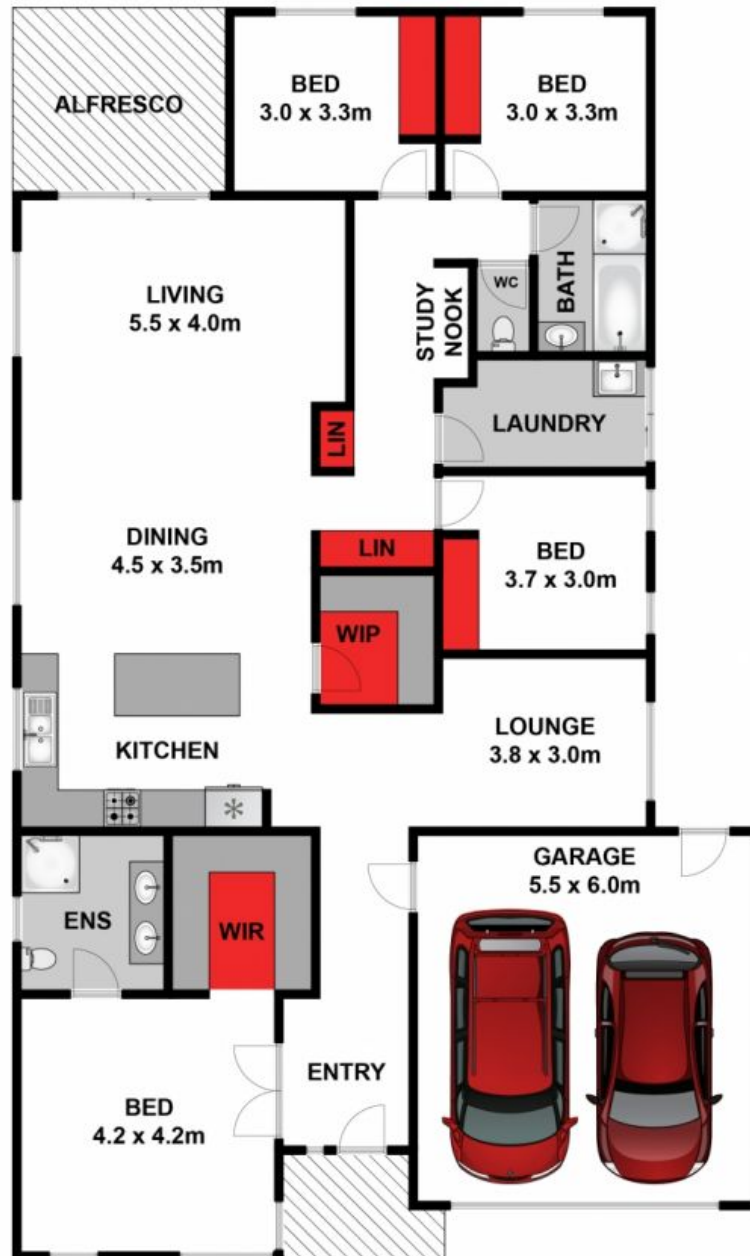
Price: \$680,000 - \$730,000
Property Type: House
Land: 608 m2

HAYDEN

Penny Dawson

0448510200

penny@haydenoceanogrove.com.



Whilst bwrn.com.au has made every attempt to ensure the accuracy of the floor plan contained here, measurements are approximate and no responsibility is taken for any error, omission, or mis-statement. This plan is for illustrative purposes only.

58 Janelle Way, Ocean Grove

HAYDEN

58 Janelle Way

OCEAN GROVE, VIC