



24 Sandridge Street LEOPOLD, VIC



4



2



2

## An Effortless Lifestyle Awaits In Leopold!

Whether you're an astute investor, young family, or simply looking for a low-maintenance lifestyle without compromising on space, this home is the one for you!

The local sporting grounds and playground with BBQ facilities are a short walk from your front door - providing plenty of outdoor areas for everyone to enjoy. Public transport is also within walking distance, while the Gateway Plaza and Gateway Sanctuary are wonderfully close by. Young families will enjoy easy access to Leopold P.S and the Leopold Community Hub.

The kitchen features black stone benchtops, a large walk-in pantry, and an island bench/breakfast bar. Stainless steel appliances include a dishwasher and 900mm oven, gas hob, and canopy rangehood.

The secure backyard provides a private play space for young children or pets. A rainwater tank helps to keep the easy-care gardens in tip-top condition. The remote double lock-up garage features internal access, plus access to storage under the staircase. Investors will

**Price:** \$580,000 - \$610,000

**Property Type:** House

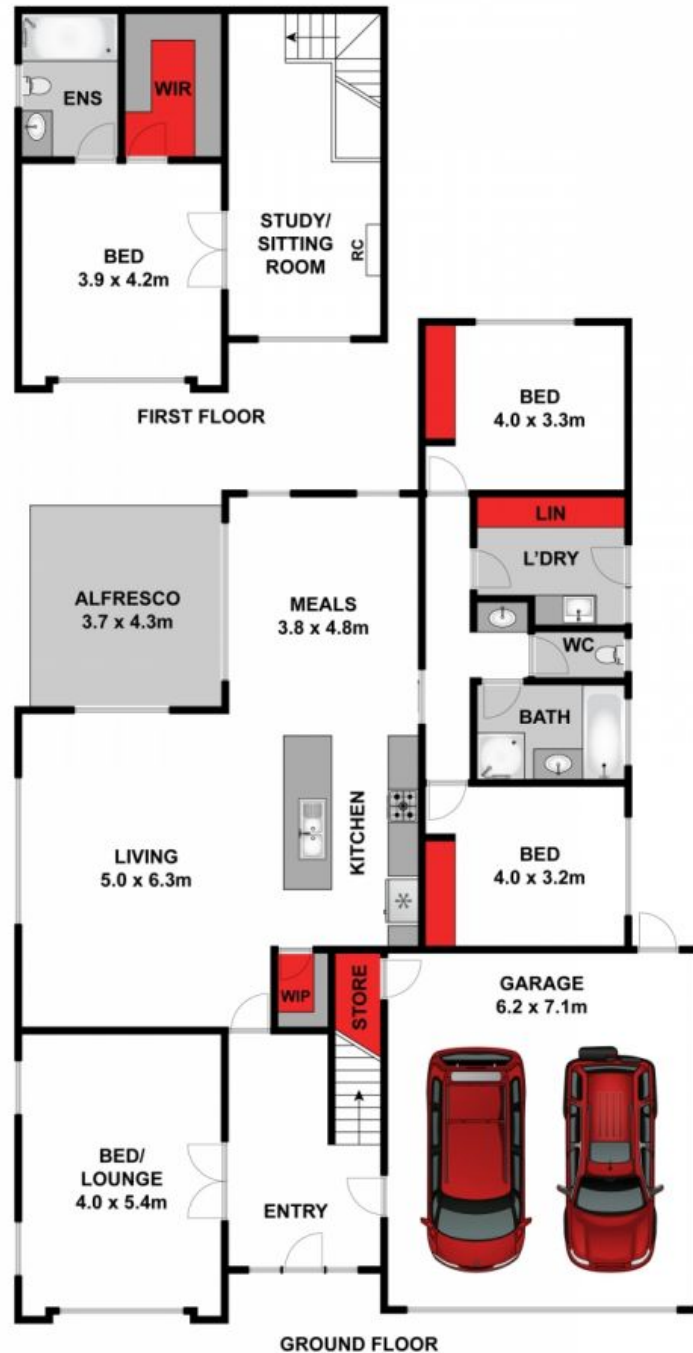
**Land:** 518 m2

# HAYDEN

**Karen Purcell**

0448510143

karenp@haydenleopold.com.au



Approx House Area 258m<sup>2</sup>

Whilst [bwrn.com.au](http://bwrn.com.au) has made every attempt to ensure the accuracy of the floor plan contained here, measurements are approximate and no responsibility is taken for any error, omission, or mis-statement. This plan is for illustrative purposes only.

**24 Sandridge Street, Leopold**

**HAYDEN**

**24 Sandridge Street**

**LEOPOLD, VIC**