



7-8 Vancouver Close LEOPOLD, VIC



4



2



3

Sensational Family Entertainer!

Nestled in one of Leopold's most sought-after pockets, this residence ticks every box for sensational family living! The spacious layout provides superb entertainment options, while ample off-street parking is another huge plus!

The Bellarine Rail Trail is within close walking distance from your front door, along with the Highland Milk Bar and Leopold Sportsmans Club. Easy access to Leopold P.S and the Leopold Community Centre takes care of families, while the nearby Gateway Plaza provides an abundance of shopping and dining options.

A double door entrance welcomes you into the home, while polished floorboards and high ceilings enrich the elegant interiors. The spacious open plan living/dining/kitchen zone unites with both the sheltered patio and enclosed alfresco ? creating endless entertaining options for year-round enjoyment! The kitchen exudes quality with stone benchtops, Miele dishwasher, 1200mm St George oven with combined gas/electric cooktop, and Qaisair canopy rangehood. The island bench/breakfast bar, built-in pantry, and powerpoint bank puts the practi

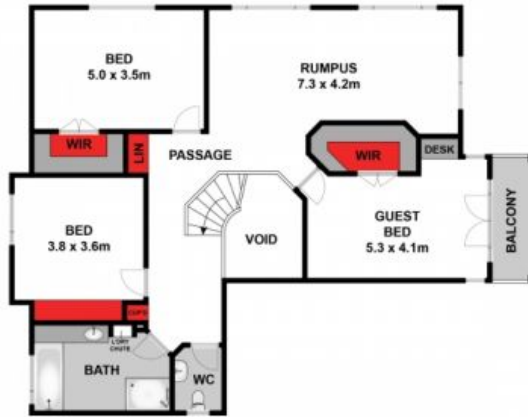
Price: \$850,000 - \$920,000
Property Type: House
Land: 1312 m2



Karen Purcell

0448510143

karenp@haydenleopold.com.au



FIRST FLOOR



GROUND FLOOR



WATER
TANK



GARAGE 8.9 x 4.0m

(NOT IN POSITION)

Approx House Area 393m²

Whilst bwrn.com.au has made every attempt to ensure the accuracy of the floor plan contained here, measurements are approximate and no responsibility is taken for any error, omission, or mis-statement. This plan is for illustrative purposes only.



7-8 Vancouver Close, Leopold

HAYDEN

7-8 Vancouver Close

LEOPOLD, VIC