



322-330 Bawtree Road LEOPOLD, VIC



4



2



4

## A Rural Retreat Awaits In Leopold!

Set upon approx. 5 acres, this property has something to impress everyone! From picturesque gardens and a swimming pool, to a four-car shed and four paddocks, you'll need to act swiftly to secure this ultimate lifestyle property!

With the conveniences of Leopold only a short drive away, families will appreciate that they're close to kindergartens, Leopold P.S., and the Gateway Plaza. Lake Connewarre is moments away for outdoor activities, while your weekends will be filled with day trips to the scenic Bellarine Peninsula. To top it all off, the Geelong CBD is within easy reach.

A slow combustion wood heater and split-system air conditioner provide additional comfort.

Outside, exquisite gardens create a wonderful sense of privacy while also zoning the secure grounds into functional areas. Home to a pond, plus a range of beautiful plants including a Queensland Bottle Tree and Silk Tree, every inch of the sprawling gardens will astound. Entertainers will be in their element with the spacious lawn leading to the fire pit and

**Price:** \$1,150,000 - \$1,250,000

**Property Type:** House

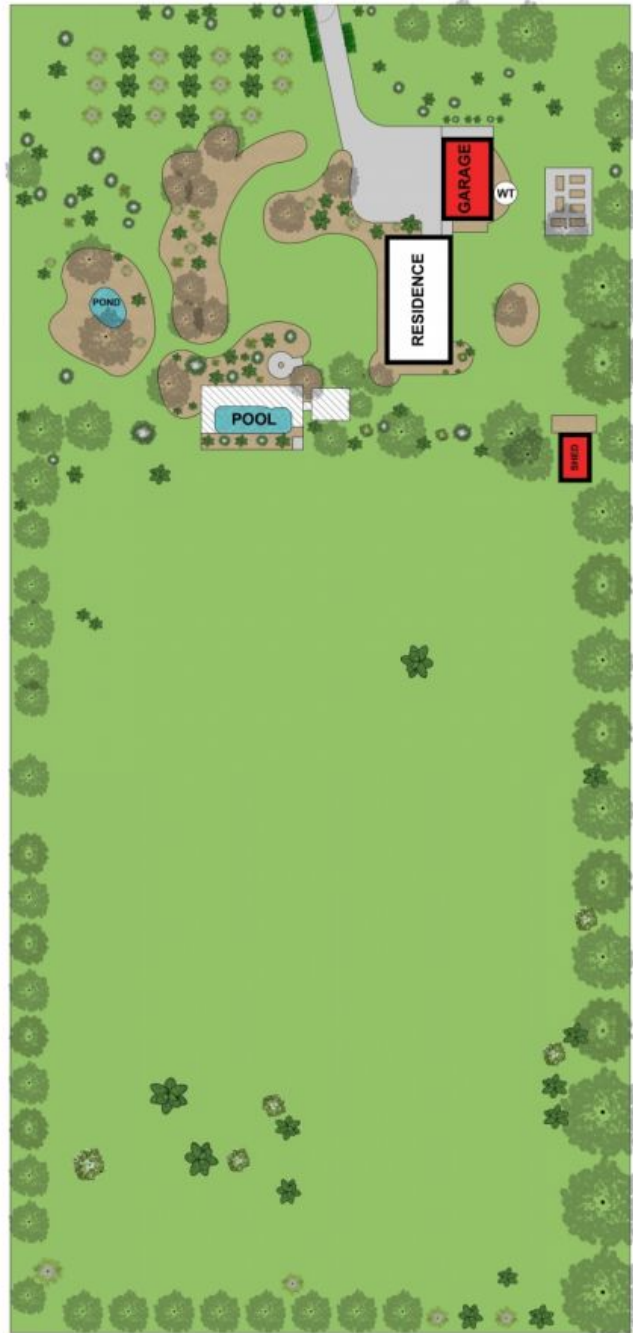
**Land:** 5 Acres

# HAYDEN

**Karen Purcell**

0448510143

karenp@haydenleopold.com.au



SITE PLAN

Approx Land Area 20212m<sup>2</sup>

Whilst [bwrn.com.au](http://bwrn.com.au) has made every attempt to ensure the accuracy of the floor plan contained here, measurements are approximate and no responsibility is taken for any error, omission, or mis-statement. This plan is for illustrative purposes only.



**322-330 Bawtree Road, Leopold**

**HAYDEN**

**322-330 Bawtree Road**

**LEOPOLD, VIC**