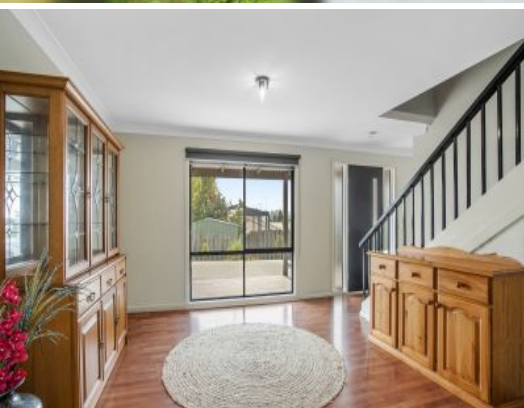




DISCLAIMER: This drawing is indicative only & all measurements are approximate.



6A Arabando Drive LEOPOLD, VIC



A Hidden Gem In A Convenient Locale!

Sitting proudly on its own title, this property promises easy living on approx. 643m²! The kitchen, bathroom, and laundry have all been beautifully renovated within the last year. Plus, the north-facing backyard will delight those who are seeking low-maintenance living without compromising on outdoor space!

Inside, the interiors are in immaculate condition. Both the lounge and living area unite with the dining/kitchen zone, creating a sense of flow throughout the lower level. With the lounge opening onto the wrap-around deck, you'll love that you can enjoy a cup of tea while overlooking the backyard.

The laundry and separate toilet complete the lower level.

With two of the bedrooms boasting west-facing views, you'll love soaking up the lights over Geelong at night.

Two split-system air conditioners and a ceiling fan provide modern comfort. The easy-care gardens leave you free to enjoy the more important things in life, while the fake timber d

Price: \$475,000 - \$495,000

Property Type: House

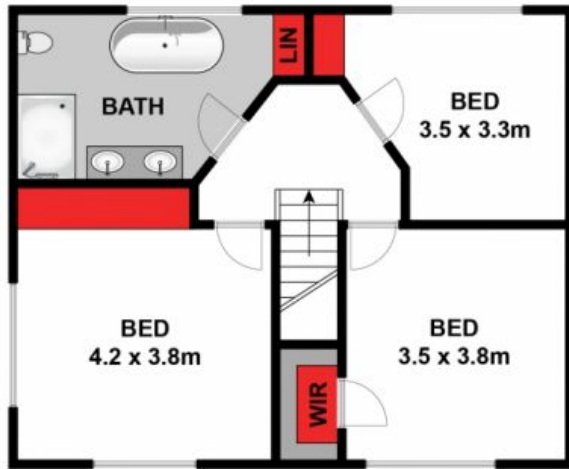
Land: 643 m²

HAYDEN

Karen Purcell

0448510143

karenp@haydenleopold.com.au



LEVEL ONE



GROUND FLOOR

Approx House Area 96m²

Whilst bwr.com.au has made every attempt to ensure the accuracy of the floor plan contained here, measurements are approximate and no responsibility is taken for any error, omission, or mis-statement. This plan is for illustrative purposes only.

6 Arabando Drive, Leopold

HAYDEN

6A Arabando Drive

LEOPOLD, VIC