



16 Timberland Street LEOPOLD, VIC



3



2



2

Laidback Family Living With Generous Backyard!

Boasting two living zones and a generous backyard, this home puts the elements in place for laidback family living!

Price: \$495,000 - \$540,000

Property Type: House

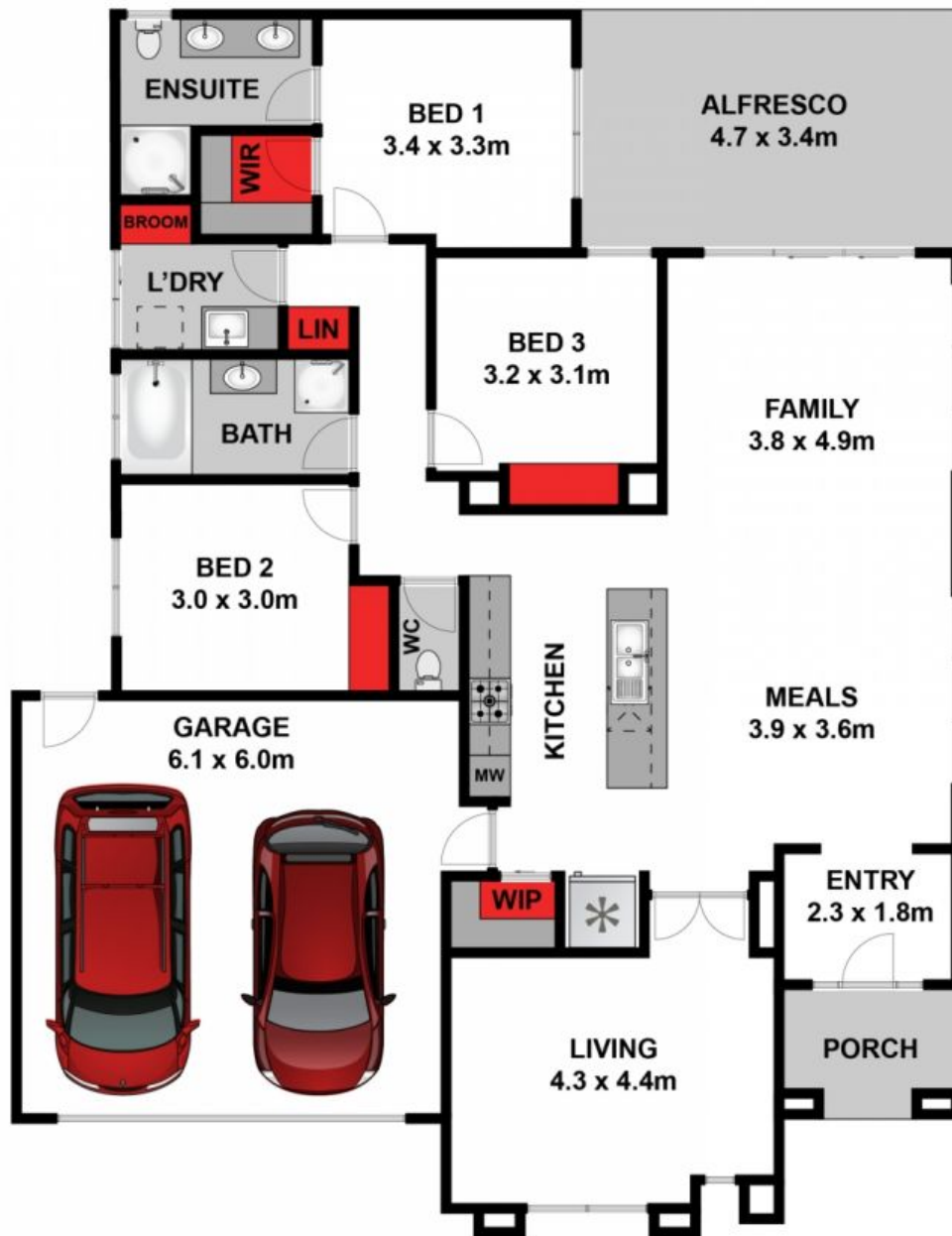
Land: 448 m2

HAYDEN

Karen Purcell

0448510143

karenp@haydenleopold.com.au



Approx House Area 187m²

Whilst bwrn.com.au has made every attempt to ensure the accuracy of the floor plan contained here, measurements are approximate and no responsibility is taken for any error, omission, or mis-statement. This plan is for illustrative purposes only.

16 Timberland Street, Leopold

HAYDEN

16 Timberland Street

LEOPOLD, VIC