



45 Eleventh Avenue ANGLESEA, VIC



4



2

## Unobstructed Views And So Close To The Beach

Private Inspections - By Appointment Only

This is authentic beach living in a prime Anglesea location where you can soak up the unobstructed views and know that your toes can be in the sand within minutes. Filled with log cabin charm, there is so much to love about this character filled home.

If views to Aireys Lighthouse and Anglesea Headlands appeal, and you are partial to a little 1980's charm, then this property is guaranteed to steal your heart. Beach side of the Great Ocean Road is increasing rare and popular; seize this opportunity and make your dreams come true.

**Price:** POA  
**Property Type:** House  
**Land:** 1708 m2

# HAYDEN

**Darcy Bennett**

0468427359

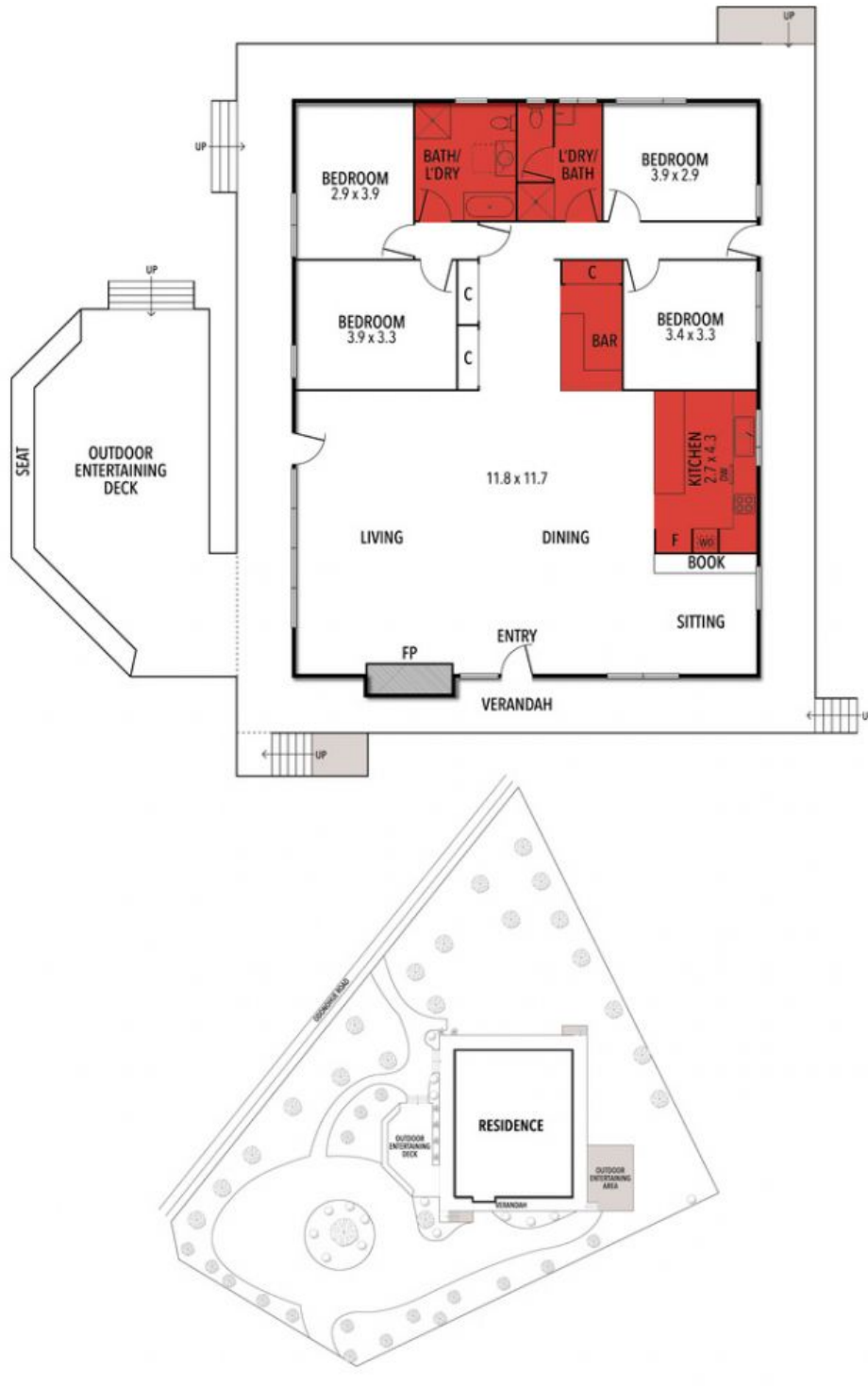
darcyb@hayden.com.au

**Bryan Hayden**

0417613250

bryanh@hayden.com.au

# 45 ELEVENTH AVENUE, ANGLESEA



THE ABOVE PLAN IS AN ARTIST'S IMPRESSION ONLY, IT INCLUDES ELEMENTS THAT ARE FOR DISPLAY PURPOSES ONLY AND MAY NOT BE TO SCALE. LANDSCAPING SHOWN IS INDICATIVE ONLY. DIMENSIONS ARE APPROXIMATE.