



26 Benita Place LEOPOLD, VIC



3



2



2

## Private Inspections Available

Spacious Living, Ample Vehicle Storage & A Superb Location!

Set upon approx. 660m2, this property will astound with spacious living zones, a north-facing backyard, and side vehicle access for caravans and boats!

**Price:** \$560,000 - \$590,000

**Property Type:** House

**Land:** 660 m2

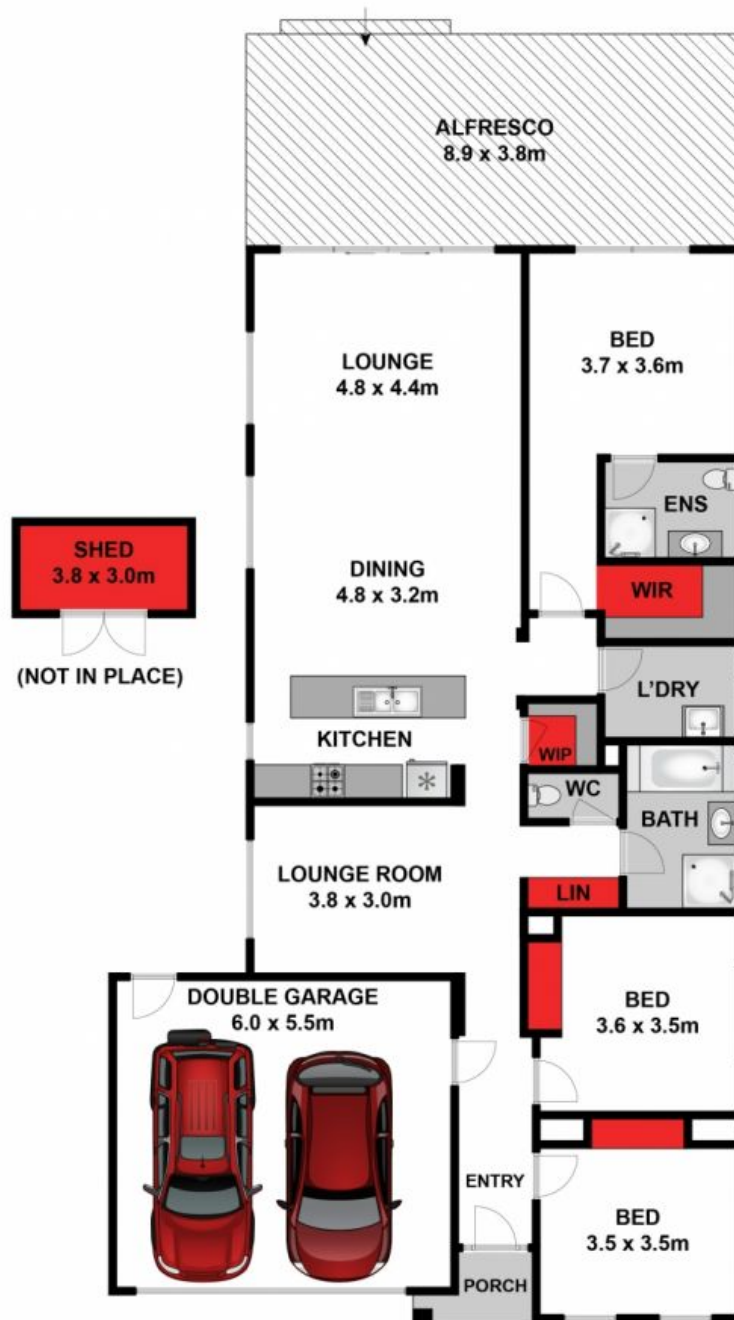
With every element in place for a superb family lifestyle, you'll need to act swiftly to avoid disappointment! Inspect without delay!

# HAYDEN

**Karen Purcell**

0448510143

karenp@haydenleopold.com.au



Approx House Area 179m<sup>2</sup>

Whilst [bwrn.com.au](http://bwrn.com.au) has made every attempt to ensure the accuracy of the floor plan contained here, measurements are approximate and no responsibility is taken for any error, omission, or mis-statement. This plan is for illustrative purposes only.

**26 Benita Place, Leopold**

**HAYDEN**

**26 Benita Place**

**LEOPOLD, VIC**