



26 Benita Place LEOPOLD, VIC



3



2



2

Private Inspections Available

Spacious Living, Ample Vehicle Storage & A Superb Location!

Set upon approx. 660m2, this property will astound with spacious living zones, a north-facing backyard, and side vehicle access for caravans and boats!

Price: \$560,000 - \$590,000

Property Type: House

Land: 660 m2

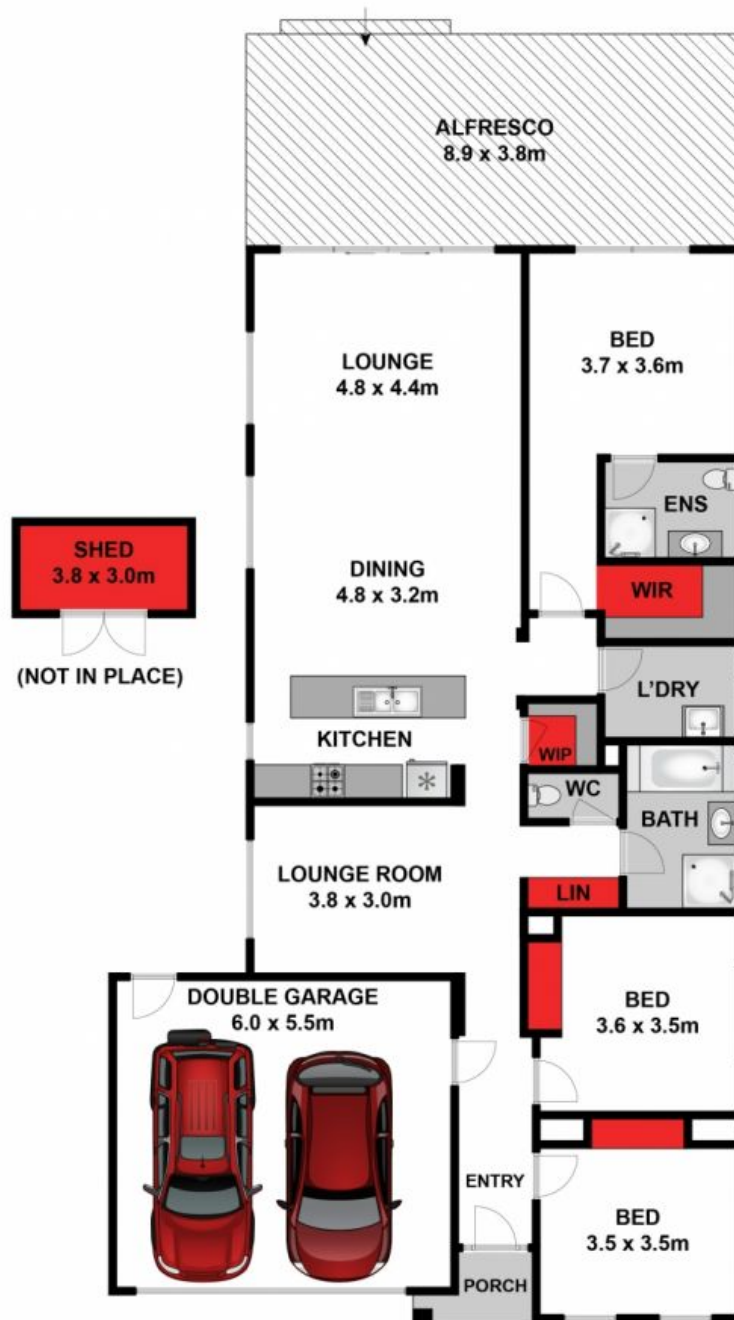
With every element in place for a superb family lifestyle, you'll need to act swiftly to avoid disappointment! Inspect without delay!

HAYDEN

Karen Purcell

0448510143

karenp@haydenleopold.com.au



Approx House Area 179m²

Whilst bwrn.com.au has made every attempt to ensure the accuracy of the floor plan contained here, measurements are approximate and no responsibility is taken for any error, omission, or mis-statement. This plan is for illustrative purposes only.

26 Benita Place, Leopold

HAYDEN

26 Benita Place

LEOPOLD, VIC