



11 Estuary Boulevard LEOPOLD, VIC



3



2



2

Delightful Family Living Awaits?

Occupying a corner block on approx. 518m², this home offers room to move both inside and out!

Positioned directly opposite the sporting grounds, you'll love that a lush green outlook is yours to keep. Public transport is footsteps away, while a short stroll will find you at the local playground and BBQ facilities. Easy access to the Gateway Plaza and Leopold P.S. puts the practical elements in place.

With the interiors in immaculate condition, there's nothing left to do but move in and enjoy. The open plan living/dining/kitchen zone creates the lively hub of the home, with sliding doors opening onto both the backyard and spacious outdoor entertaining deck. This indoor-outdoor flow is perfect for modern-day living and entertaining loved ones. The kitchen features stone benchtops, a built-in pantry, and stainless steel appliances (dishwasher and 900mm oven, gas hob, rangehood). The lounge creates yet another spot to pop up your feet

Price: \$510,000 - \$540,000

Property Type: House

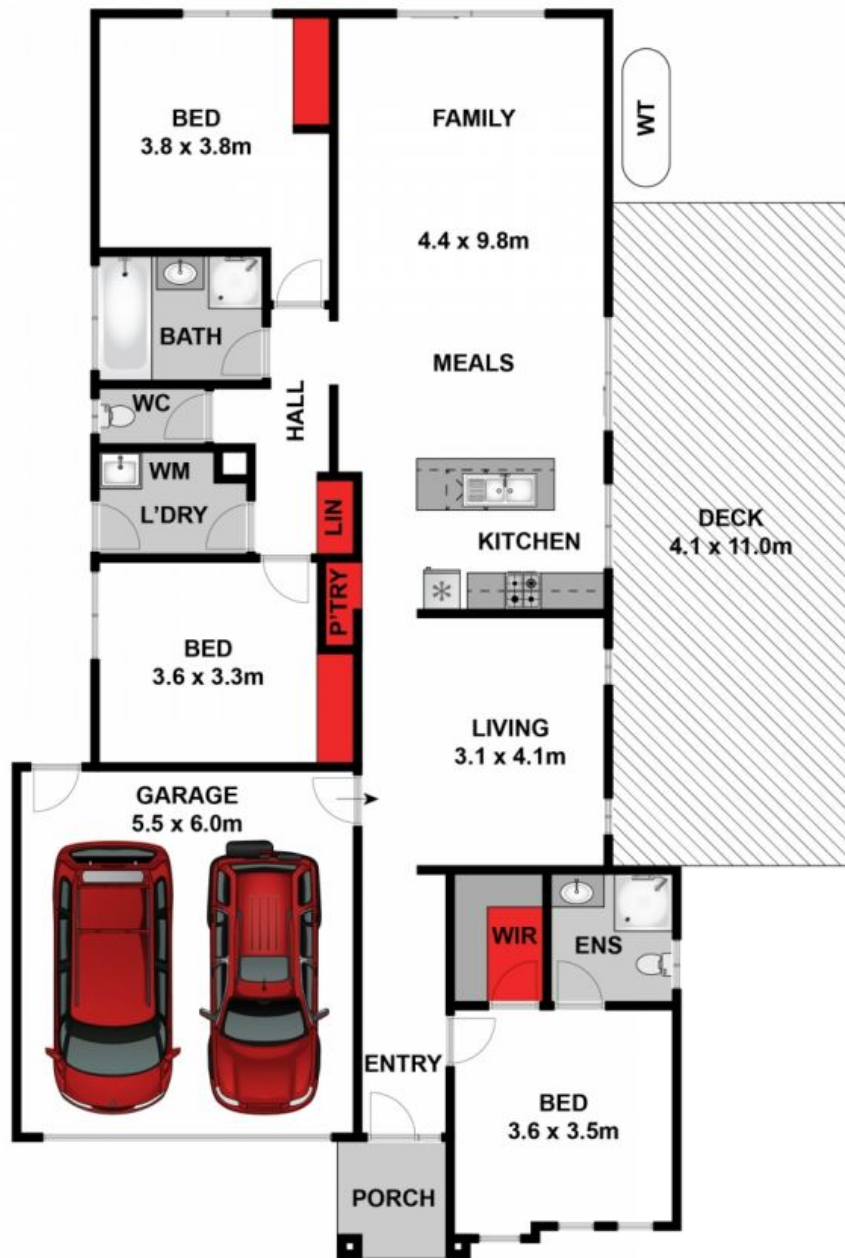
Land: 518 m²

HAYDEN

Karen Purcell

0448510143

karenp@haydenleopold.com.au



Approx House Area 178m²

Whilst bwrn.com.au has made every attempt to ensure the accuracy of the floor plan contained here, measurements are approximate and no responsibility is taken for any error, omission, or mis-statement. This plan is for illustrative purposes only.



11 Estuary Boulevard, Leopold

HAYDEN

11 Estuary Boulevard

LEOPOLD, VIC