



29 Estuary Boulevard LEOPOLD, VIC



## Contemporary Living In A Superb Locale!

Don't miss this opportunity to embrace blissful living in Leopold! Showcasing contemporary interiors and a north-facing backyard, you'll need to act swiftly to avoid disappointment!

**Price:** \$495,000 - \$530,000  
**Property Type:** House  
**Land:** 400 m2

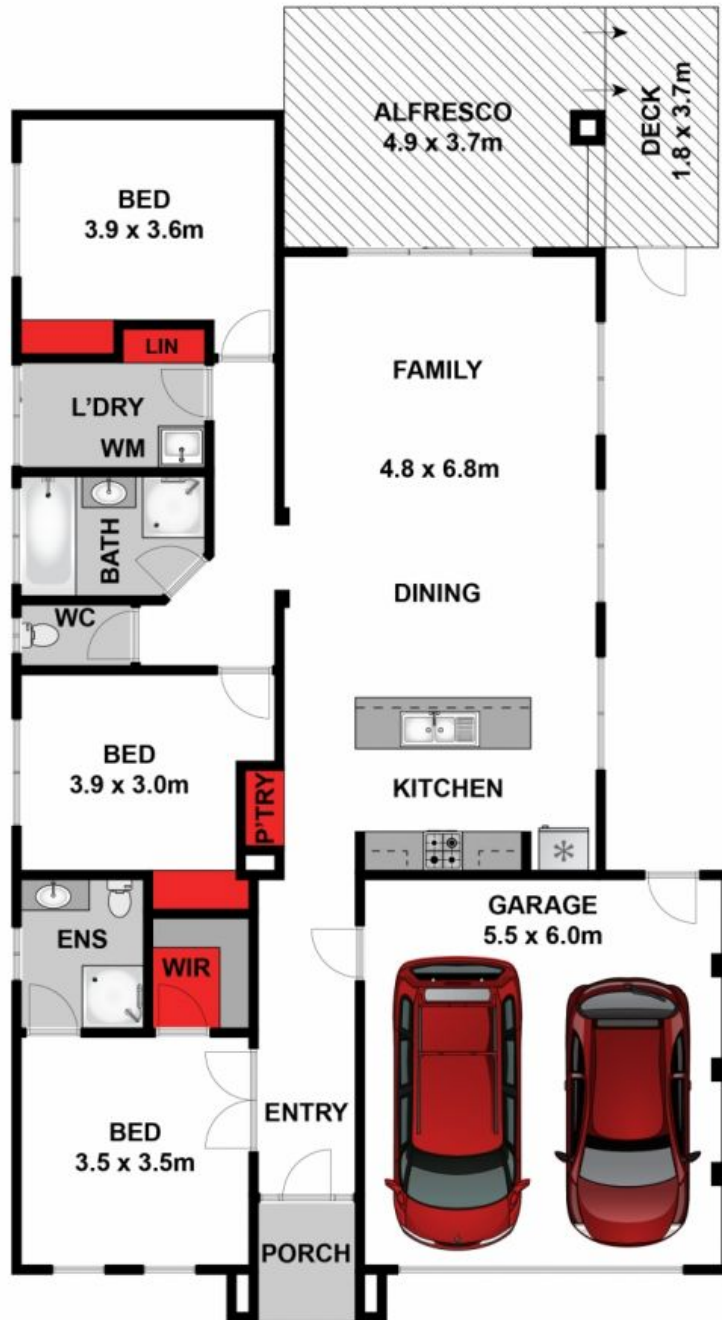
If you've been dreaming of a carefree lifestyle, then look no further! Inspect without delay!

# HAYDEN

**Karen Purcell**

0448510143

karenp@haydenleopold.com.au



Approx House Area 160m<sup>2</sup>

Whilst [bwr.com.au](http://bwr.com.au) has made every attempt to ensure the accuracy of the floor plan contained here, measurements are approximate and no responsibility is taken for any error, omission, or mis-statement. This plan is for illustrative purposes only.

**29 Estuary Boulevard, Leopold**

**HAYDEN**

**29 Estuary Boulevard**

**LEOPOLD, VIC**