



29 Estuary Boulevard LEOPOLD, VIC



3



2



2

Contemporary Living In A Superb Locale!

Don't miss this opportunity to embrace blissful living in Leopold! Showcasing contemporary interiors and a north-facing backyard, you'll need to act swiftly to avoid disappointment!

Price: \$495,000 - \$530,000

Property Type: House

Land: 400 m2

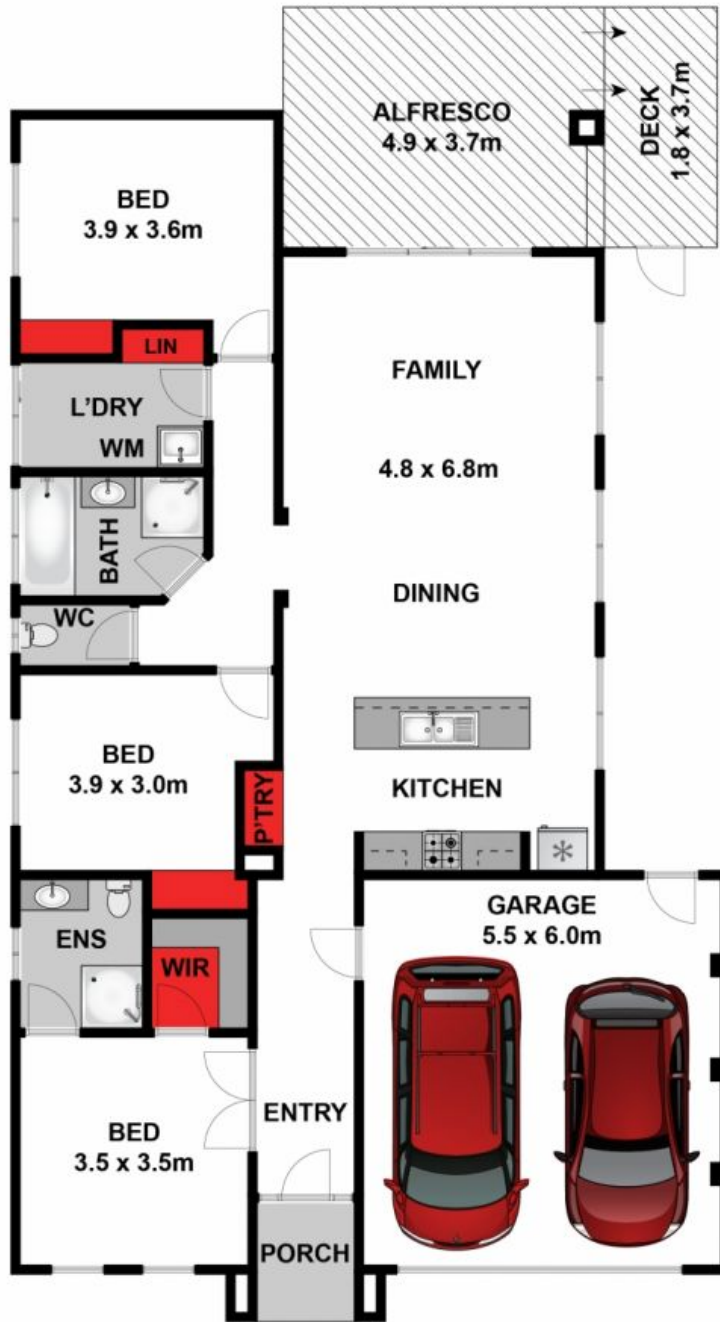
If you've been dreaming of a carefree lifestyle, then look no further! Inspect without delay!

HAYDEN

Karen Purcell

0448510143

karenp@haydenleopold.com.au



Approx House Area 160m²

Whilst bwrn.com.au has made every attempt to ensure the accuracy of the floor plan contained here, measurements are approximate and no responsibility is taken for any error, omission, or mis-statement. This plan is for illustrative purposes only.

29 Estuary Boulevard, Leopold

HAYDEN

29 Estuary Boulevard

LEOPOLD, VIC