



1 Clivedon Court LEOPOLD, VIC



3



1



2

Moving up in the World!

Private Inspections Available!

Don't miss this opportunity to embrace easy living in Leopold! Whether you're a family, first homebuyer, or investor, this home is an absolute gem!

Price: \$410,000 - \$435,000

Property Type: House

Land: 475 m2

Presenting easy living in a Leopold hotspot, you'll need to act swiftly to avoid disappointment! Enquire today!

HAYDEN

Karen Purcell

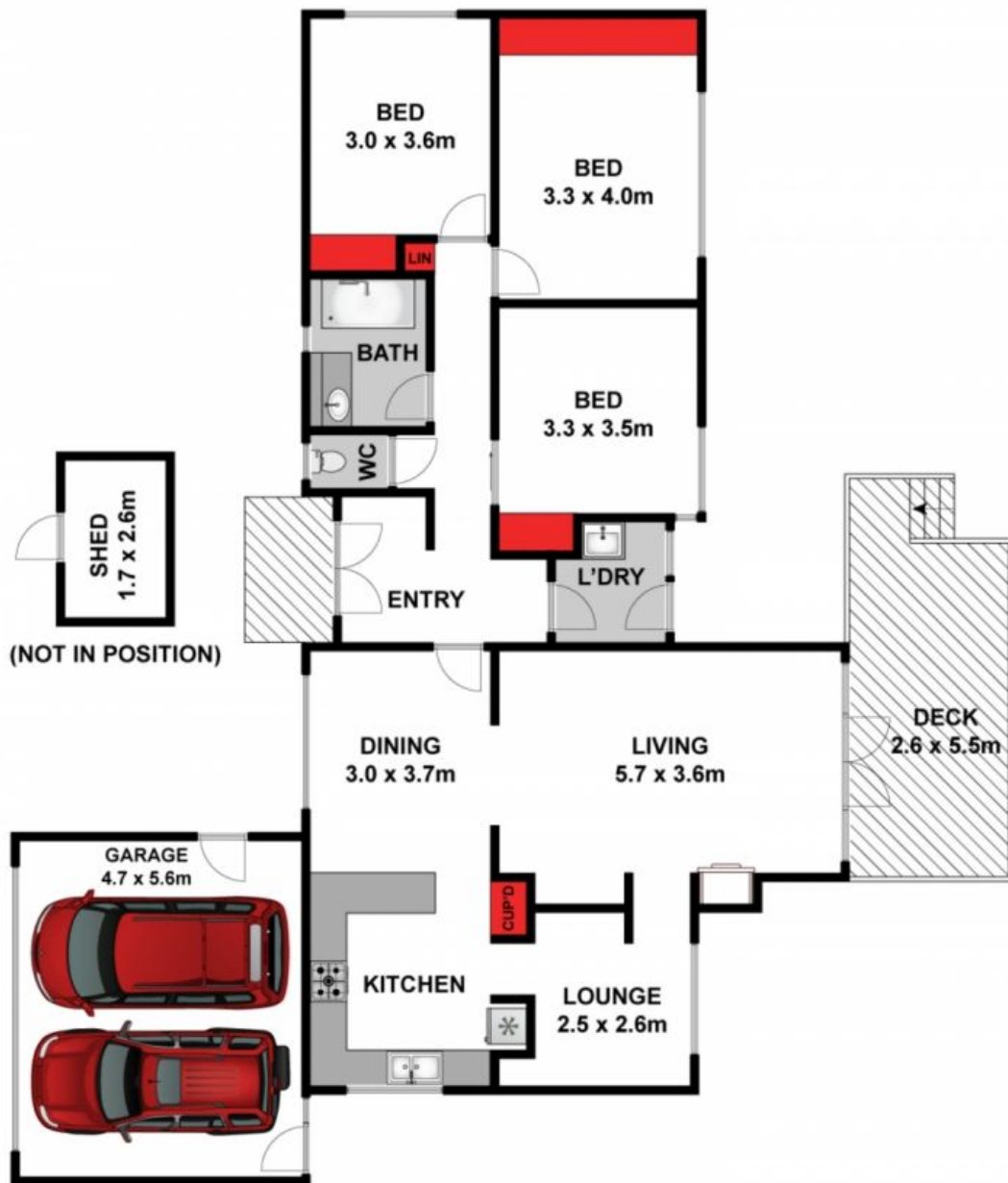
0448510143

karenp@haydenleopold.com.au

Robyn Grumley

0448510134

robyn@haydenleopold.com.au



Approx House Area 153m²

Whilst bwrn.com.au has made every attempt to ensure the accuracy of the floor plan contained here, measurements are approximate and no responsibility is taken for any error, omission, or mis-statement. This plan is for illustrative purposes only.



1 Clivedon Court, Leopold

HAYDEN

1 Clivedon Court

LEOPOLD, VIC