



1 Clivedon Court LEOPOLD, VIC



3



1



2

## Moving up in the World!

Private Inspections Available!

Don't miss this opportunity to embrace easy living in Leopold! Whether you're a family, first homebuyer, or investor, this home is an absolute gem!

**Price:** \$410,000 - \$435,000

**Property Type:** House

**Land:** 475 m2

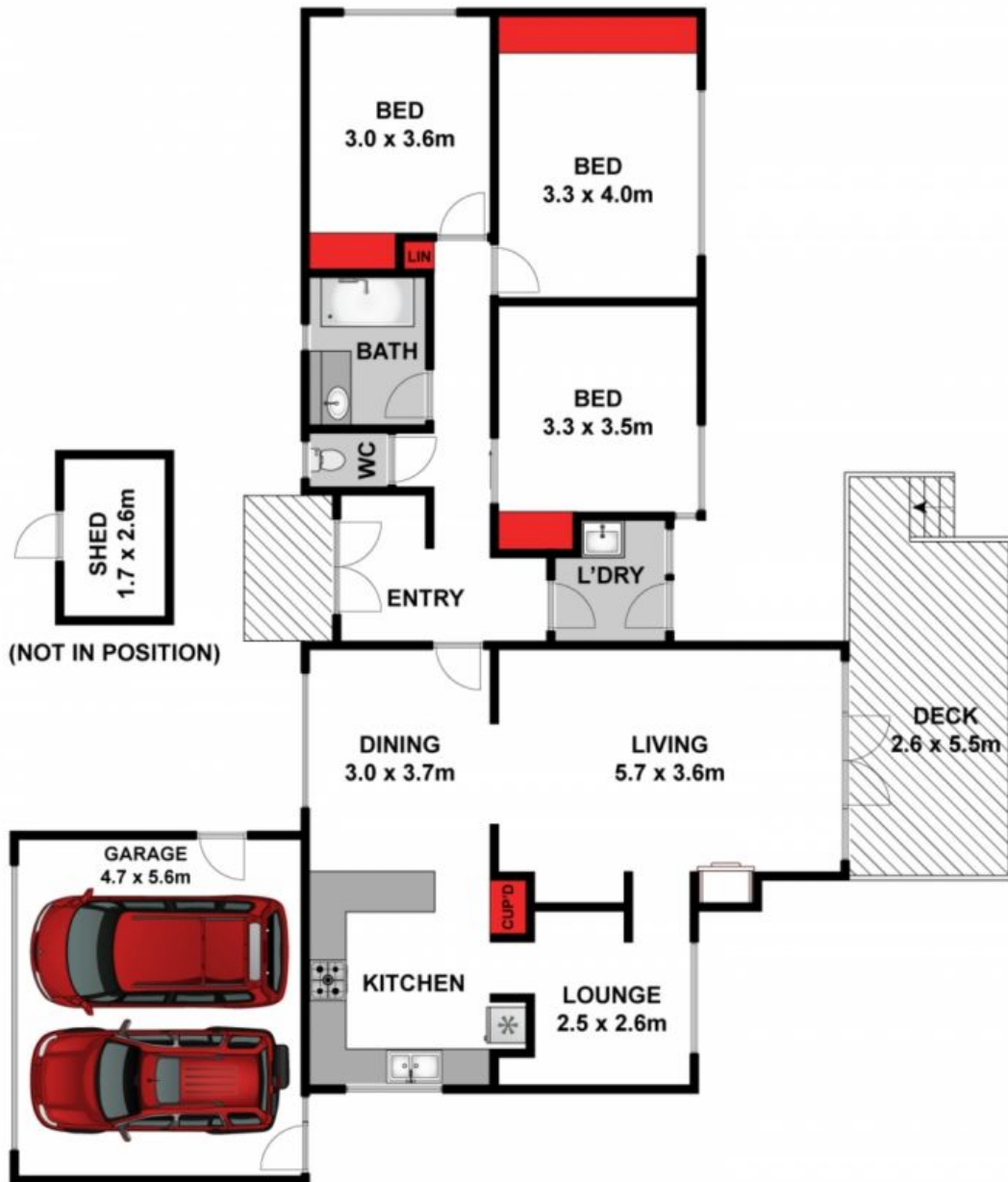
Presenting easy living in a Leopold hotspot, you'll need to act swiftly to avoid disappointment! Enquire today!

# HAYDEN

**Karen Purcell**

0448510143

karenp@haydenleopold.com.au



Approx House Area 153m<sup>2</sup>

Whilst [bwrn.com.au](http://bwrn.com.au) has made every attempt to ensure the accuracy of the floor plan contained here, measurements are approximate and no responsibility is taken for any error, omission, or mis-statement. This plan is for illustrative purposes only.



**1 Clivedon Court, Leopold**

**HAYDEN**

**1 Clivedon Court**

**LEOPOLD, VIC**