

# DUAL ACCESS



42 Wyatt Street OCEAN GROVE, VIC



3



1



3

## Prime Potential in Central Location

Centrally-located in the coastal town of Ocean Grove, this property comes with loads of potential and represents a fantastic opportunity for renovators, developers or investors. The large 760 sqm (approx.) block has dual frontage - Wyatt Street and Southport Lane - and could be developed (STCA) to take advantage of access from each. The 3-bedroom brick house on site is solid, comes in its original condition and is currently tenanted.

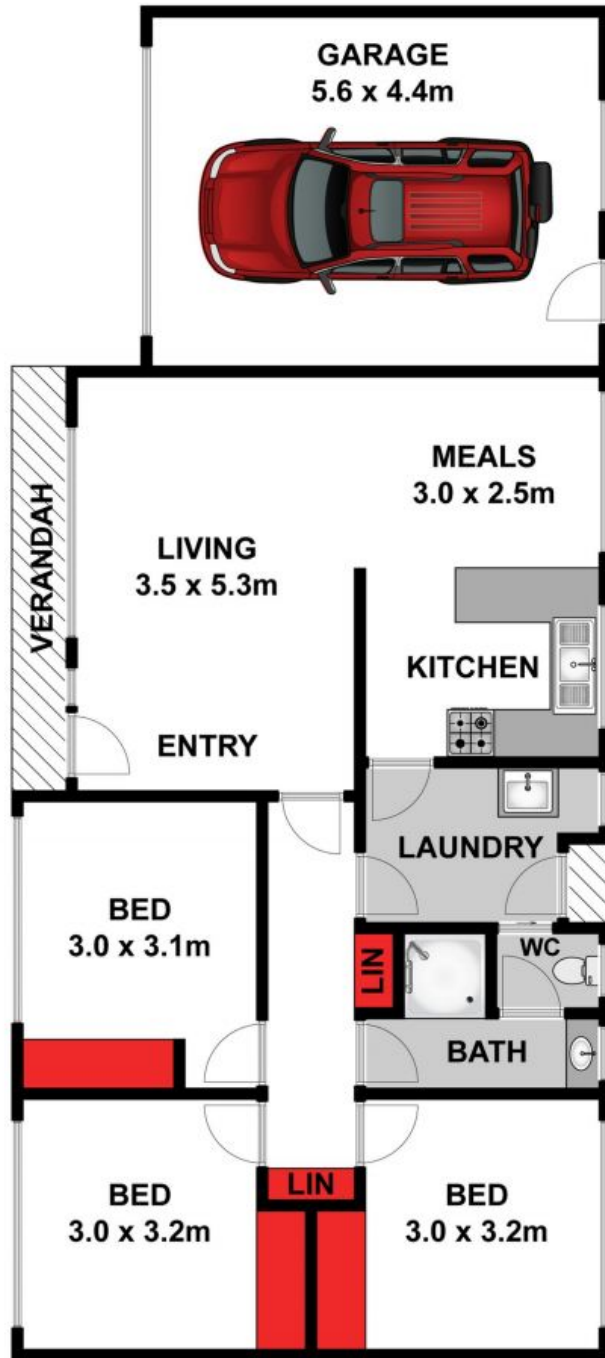
**Price:** \$700,000 - \$750,000  
**Property Type:** House  
**Land:** 761 m2

# HAYDEN

**Hugh McKewan**

0417538779

[hugh@haydenoceanogrove.com.au](mailto:hugh@haydenoceanogrove.com.au)



Whilst [bwrn.com.au](http://bwrn.com.au) has made every attempt to ensure the accuracy of the floor plan contained here, measurements are approximate and no responsibility is taken for any error, omission, or mis-statement. This plan is for illustrative purposes only.

**42 Wyatt Street, Ocean Grove**

**HAYDEN**

42 Wyatt Street

**OCEAN GROVE, VIC**