

DUAL ACCESS



42 Wyatt Street OCEAN GROVE, VIC



3



1



3

Prime Potential in Central Location

Centrally-located in the coastal town of Ocean Grove, this property comes with loads of potential and represents a fantastic opportunity for renovators, developers or investors. The large 760 sqm (approx.) block has dual frontage - Wyatt Street and Southport Lane - and could be developed (STCA) to take advantage of access from each. The 3-bedroom brick house on site is solid, comes in its original condition and is currently tenanted.

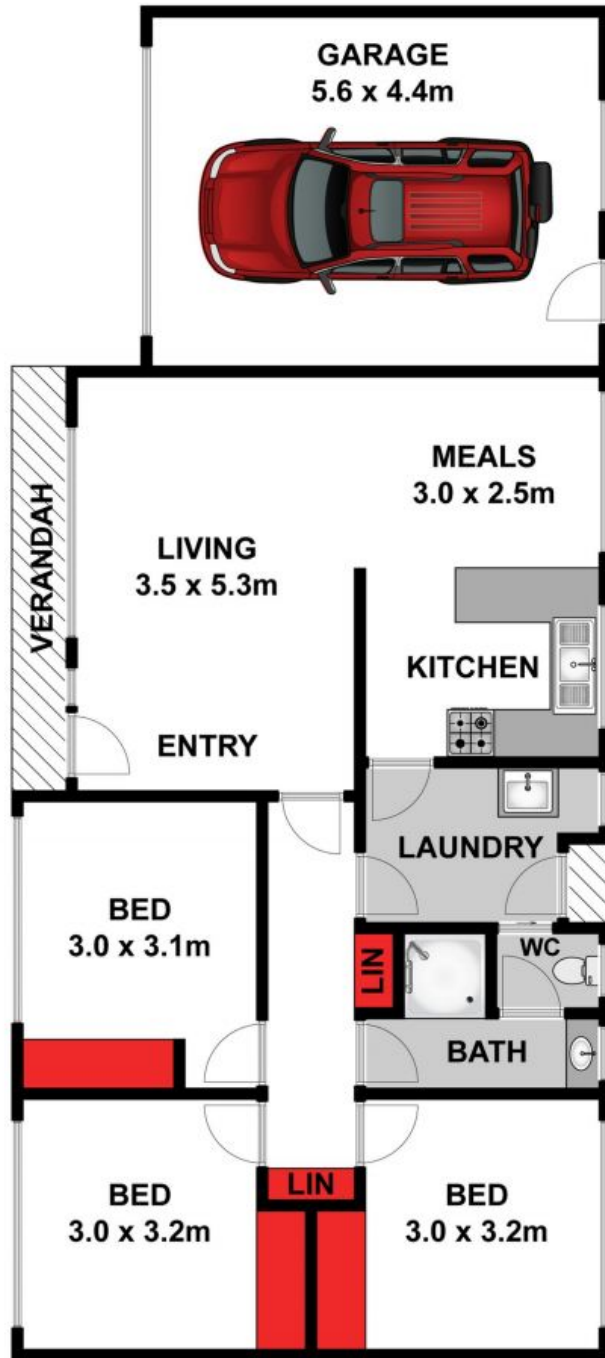
Price: \$700,000 - \$750,000
Property Type: House
Land: 761 m2

HAYDEN

Hugh McKewan

0417538779

hugh@haydenocean Grove.com.au



Whilst bwrn.com.au has made every attempt to ensure the accuracy of the floor plan contained here, measurements are approximate and no responsibility is taken for any error, omission, or mis-statement. This plan is for illustrative purposes only.

42 Wyatt Street, Ocean Grove

HAYDEN

42 Wyatt Street

OCEAN GROVE, VIC