



248-256 Bawtree Road LEOPOLD, VIC



4



2



7

3.5 acres of Bliss on the Bellarine

Set upon approx. 3.5 acres, this property offers sensational family living in an idyllic rural setting! Showcasing beautifully updated interiors, a spacious outdoor entertaining zone with spa, and an expansive 5-car work shed, every inch of this property will delight!

Price: \$1,230,000 - \$1,300,000

Property Type: Acreage/Semi-Rural

Land: 3.55 Acres

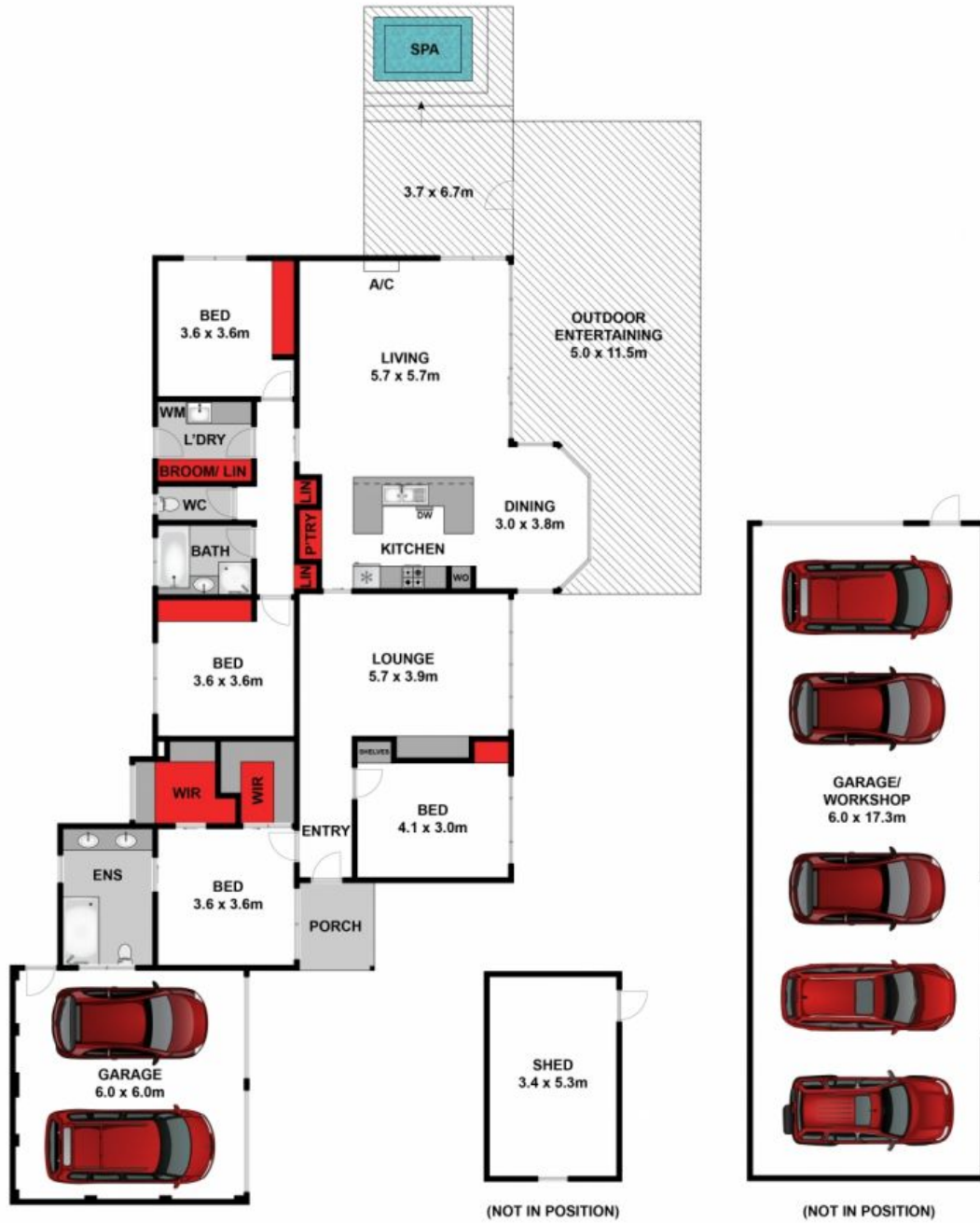
With something to impress every family member, you'll need to act swiftly to secure this rare lifestyle opportunity! Inspect ASAP!

HAYDEN

Karen Purcell

0448510143

karenp@haydenleopold.com.au



Approx House Area 223m²

Whilst bwrn.com.au has made every attempt to ensure the accuracy of the floor plan contained here, measurements are approximate and no responsibility is taken for any error, omission, or mis-statement. This plan is for illustrative purposes only.

248-256 Bawtree Road, Leopod

HAYDEN

248-256 Bawtree Road

LEOPOLD, VIC