



12 Somerdale Avenue OCEAN GROVE, VIC



2



1



1

## Light and Bright Beachside Property

Situated on a generous allotment and behind a high fence is this Ocean Grove property that is an ideal holiday investment, rental, first-home purchase or an opportunity to transform into your coastal dream (STCA).

Upon entry is an open-plan living and dining area that is filled with natural light. Behind a cavity door is a u-shaped kitchen with ample storage and stand-out bay window. At the other end of the house are two bedrooms with built-in robes, shared bathroom, separate toilet and laundry.

Outside is a large yard, plenty of established greenery, garden shed, carport, enclosed space for a spa/hot tub and red brick paving.

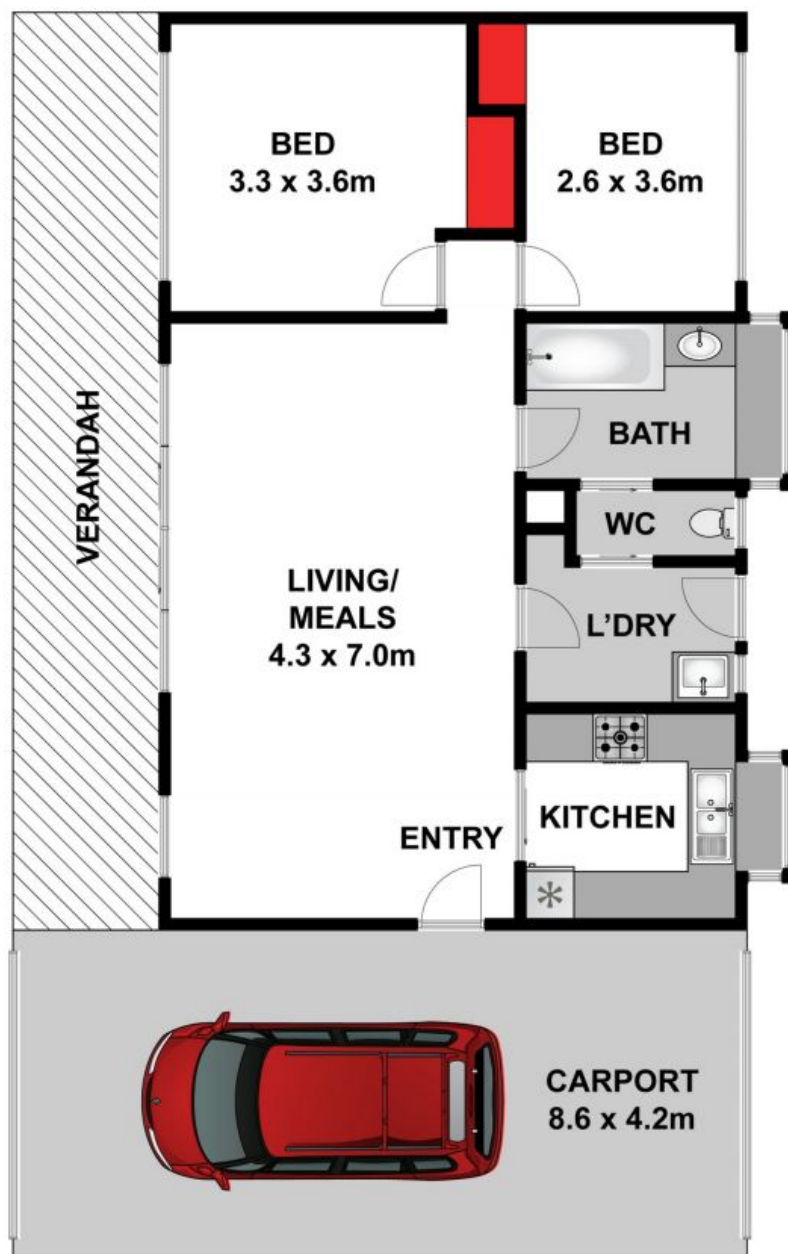
Located close to the beach, sporting facilities, shopping centre, secondary school and amenities. Either live in as it is, let it out or bring it into modern times with a facelift.

**Price:** \$550,000-\$600,000  
**Property Type:** House  
**Land:** 633 m2

# HAYDEN

Hayden Real Estate -

**Ocean Grove**  
 samn@hayden.com.au



Whilst [bwrn.com.au](http://bwrn.com.au) has made every attempt to ensure the accuracy of the floor plan contained here, measurements are approximate and no responsibility is taken for any error, omission, or mis-statement. This plan is for illustrative purposes only.



12 Somerdale Avenue, Ocean Grove **HAYDEN**

12 Somerdale Avenue

OCEAN GROVE, VIC