



22 Tispa Drive LEOPOLD, VIC



3



2



2

Easy Living Awaits In Leopold!

A carefree lifestyle awaits with public transport and sporting grounds an instant from your front door. The local playground and BBQ area are also a short walk away, while Melaluka Road grants easy access to the Gateway Sanctuary and expansive Gateway Plaza. Close access to Leopold P.S, Leopold Community Hub and the Leopold Library puts the practical elements in place for families.

When it comes to easy living, this home packs a punch! So if you're looking to secure a terrific family home or investment opportunity, you'll need to act quickly to avoid disappointment!

Price: \$500,000 - \$550,000

Property Type: House

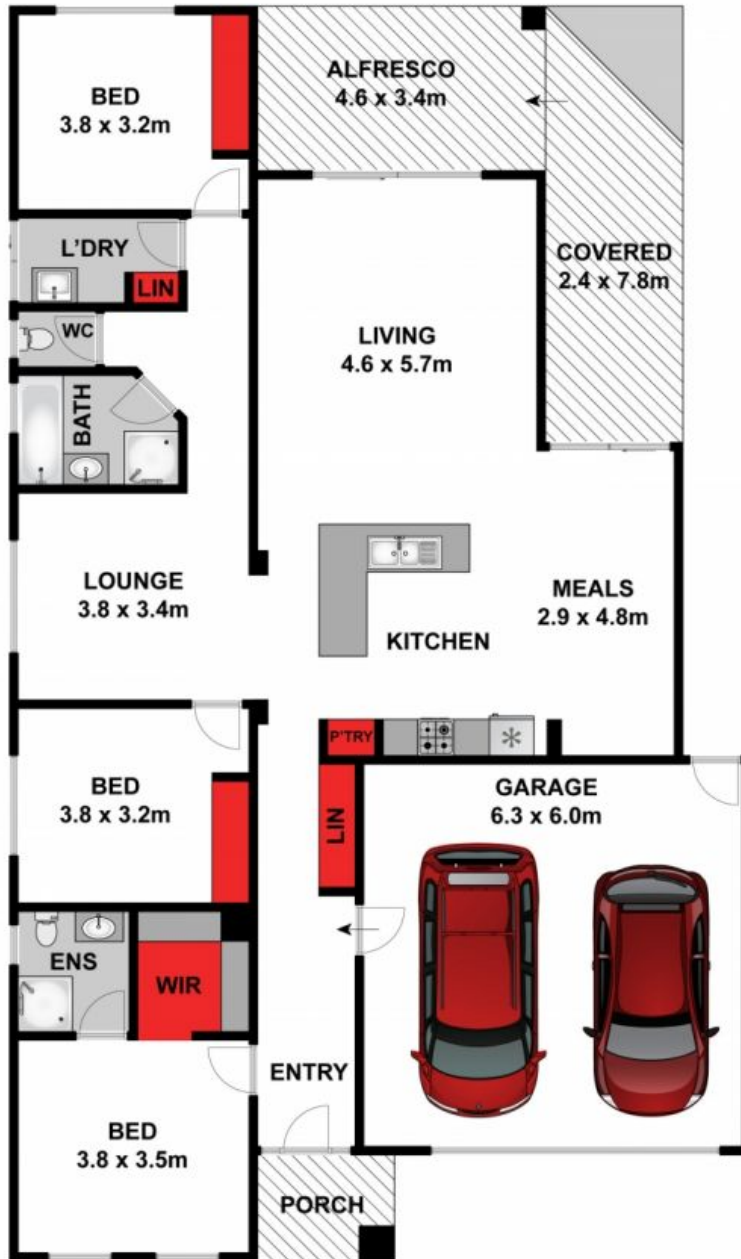
Land: 448 m2

HAYDEN

Karen Purcell

0448510143

karenp@haydenleopold.com.au



Approx House Area 192m²

Whilst bwrn.com.au has made every attempt to ensure the accuracy of the floor plan contained here, measurements are approximate and no responsibility is taken for any error, omission, or mis-statement. This plan is for illustrative purposes only.

22 Tispa Drive, Leopold

HAYDEN

22 Tispa Drive

LEOPOLD, VIC