



21 Eighth Avenue ANGLESEA, VIC



3



2



2

1960's Character In Coveted Location

This is a rare and exciting opportunity to secure a piece of Pt Roadknight Beach history. This property is full of character and offers unlimited potential to create a coastal dream home.

Situated on a 1,398m² (approx) allotment, this classic 1960's holiday escape can be enjoyed as it is while you contemplate how to fulfil its promise. The views on offer from the mezzanine showcase the stunning coast towards Aireys Inlet and hint at the potential panorama from a two storey home (STCA).

The expansive garden boasts lush lawns and established trees and offers plenty of room to extend the footprint if required (STCA).

Price: \$1,570,000

Property Type: House

Land: 1394 m²

HAYDEN

Darcy Bennett

0468427359

darcyb@hayden.com.au

Bryan Hayden

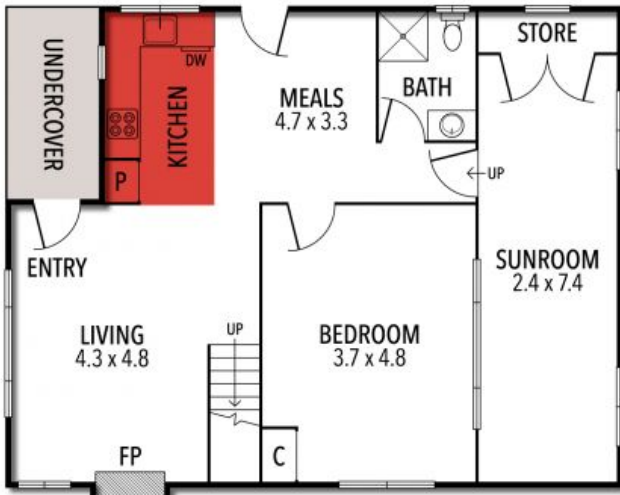
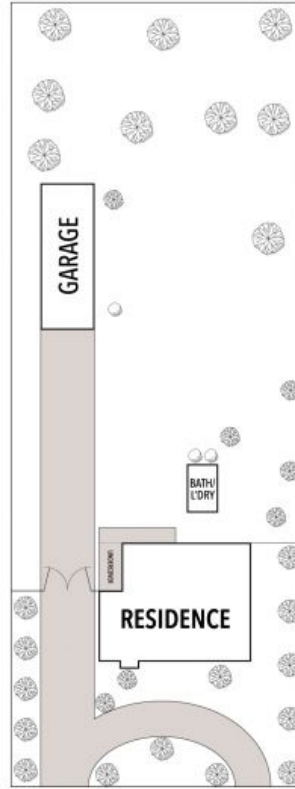
0417613250

bryanh@hayden.com.au

21 EIGHTH AVENUE, ANGLESEA



FIRST FLOOR



GROUND FLOOR



(NOT IN POSITION)



(NOT IN POSITION)



THE ABOVE PLAN IS AN ARTIST'S IMPRESSION ONLY, IT INCLUDES ELEMENTS THAT ARE FOR DISPLAY PURPOSES ONLY AND MAY NOT BE TO SCALE. LANDSCAPING SHOWN IS INDICATIVE ONLY. DIMENSIONS ARE APPROXIMATE.