



318/100 The Esplanade TORQUAY, VIC



3



2



2

Under \$800,000! Executive Apartment

Spacious three bedroom apartment set over two storeys. Enjoy as your luxury holiday home or permanent residence or even utilise the strong on-site holiday returns, whatever your decision the choice is yours with no restrictions.

Features and facilities of the resort include:

Two secure undercover car parks

Kitchen has stone bench tops with gas hot plate and electric oven

Two generous balconies one facing east overlooking the pool? and the other to the west looking over Deep Creek and tennis courts

Contemporary bathroom plus ensuite to the main bedroom

Spacious open plan lounge/dining/kitchen with fire feature

Outdoor swimming pool/lagoon with spa

One indoor heated lap pool

Excellent amenities - 2 x pools including indoor lap pool, spa, and tennis courts, BBQ's,

Price: \$799,000
Property Type: Apartment

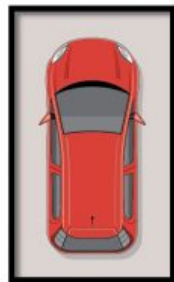
HAYDEN

Ben Smith

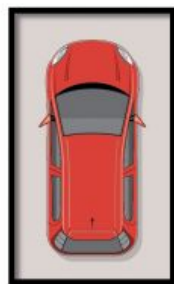
0423050825

bens@hayden.com.au

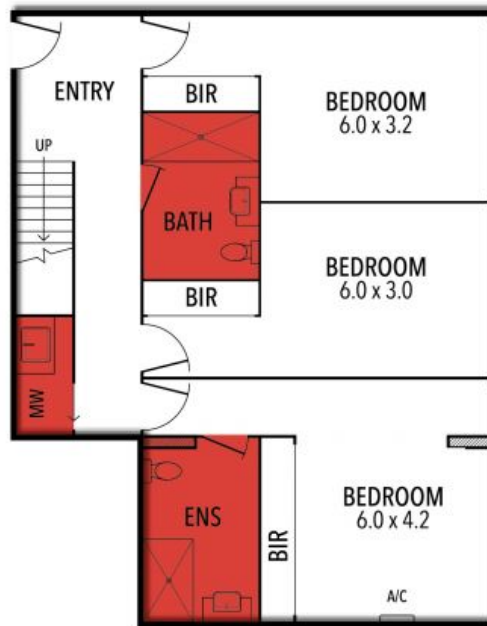
318/100 The Esplanade, Torquay



CARSPACE
(NOT IN POSITION)



CARSPACE
(NOT IN POSITION)



THE ABOVE PLAN IS AN ARTIST'S IMPRESSION ONLY, IT INCLUDES ELEMENTS THAT ARE FOR DISPLAY PURPOSES ONLY AND MAY NOT BE TO SCALE. LANDSCAPING SHOWN IS INDICATIVE ONLY. DIMENSIONS ARE APPROXIMATE.