



35/12 Lahinch Mews TORQUAY, VIC



3



3



2

Fairway Views And Sunshine

This is contemporary, quality townhouse living with a community feel and beautiful fairway views. Offered over three levels, it is spacious, light filled and the perfect lock and leave.

The open plan living area on the second level is a highlight. It features a sunny space to relax with large sliding doors onto a sheltered balcony overlooking the golf course. Entertain or wind down and relax all year round. The generous kitchen features Smeg appliances, Caesarstone bench tops, ample storage and access to a second outdoor living area. A powder room is also on this level.

Price: \$745,000 - \$775,000

Property Type: Townhouse

Land: 112 m2

HAYDEN

Hayden Real Estate Ben Smith

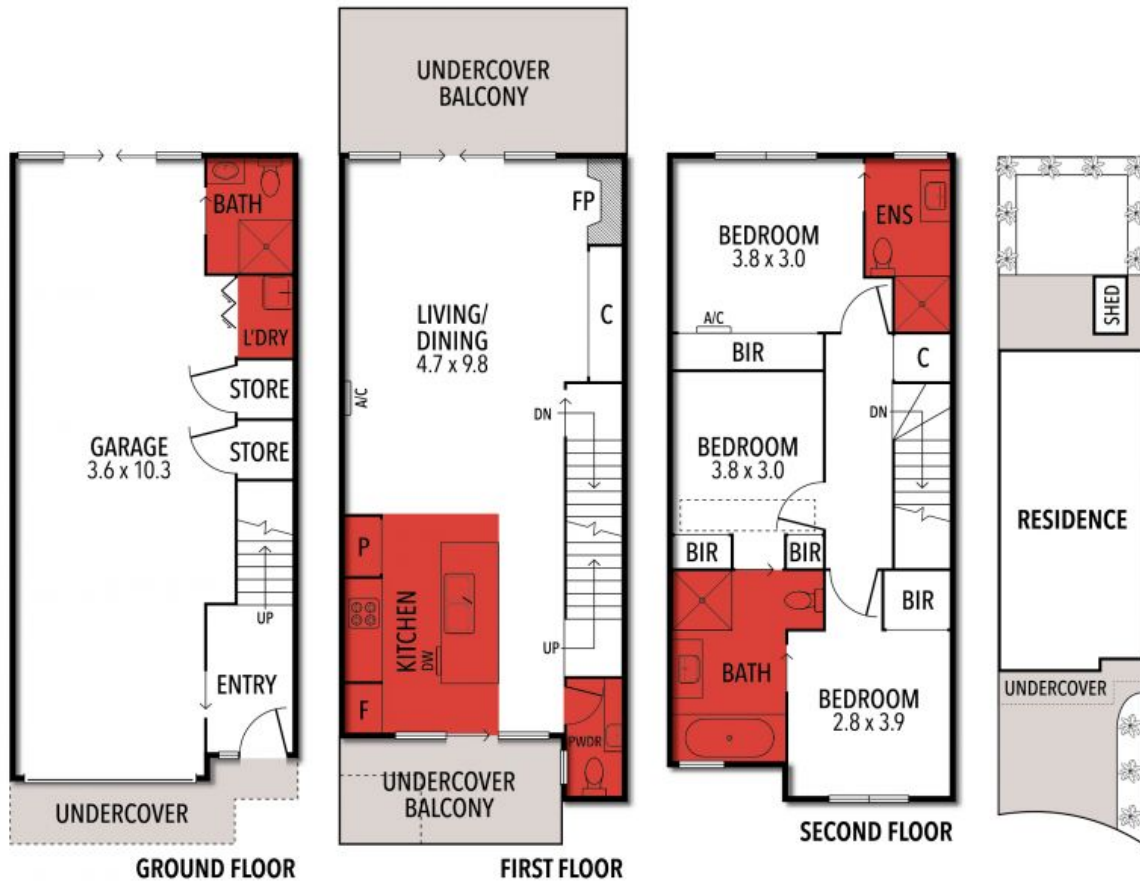
0423050825

Torquay

samh@hayden.com.au

bens@hayden.com.au

35/12 LAHINCH MEWS, TORQUAYT



THE ABOVE PLAN IS AN ARTIST'S IMPRESSION ONLY, IT INCLUDES ELEMENTS THAT ARE FOR DISPLAY PURPOSES ONLY AND MAY NOT BE TO SCALE. LANDSCAPING SHOWN IS INDICATIVE ONLY. DIMENSIONS ARE APPROXIMATE.