



22A Boston Road TORQUAY, VIC



2



2



2

Central Torquay Townhouse With Elevator

This is clever, contemporary and a little metropolitan right in the heart of Torquay. Visual appeal, quality and the latest in smart home technology all combine to deliver an experience of extreme liveability.

Downstairs features a king sized and inviting master suite with walk in robe and double shower in the en-suite. A second bedroom enjoys a sunny position and is conveniently located adjacent to the family bathroom. A full size laundry plus additional under stair storage are also included. Secure off street parking is accessed via a rear laneway with a double carport provided.

Price: \$1,150,000
Property Type: Townhouse
Land: 163 m2

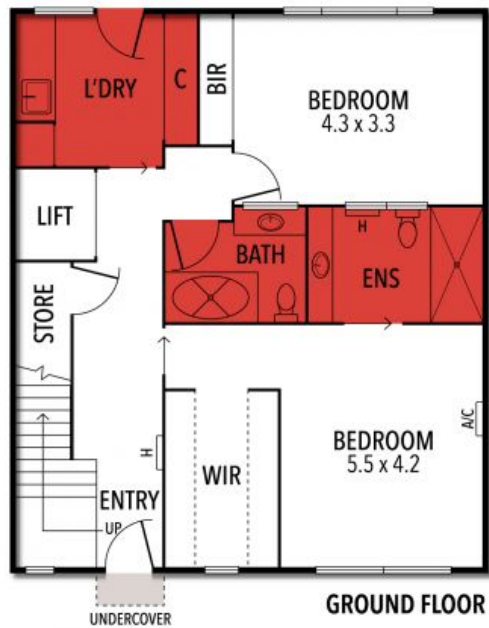
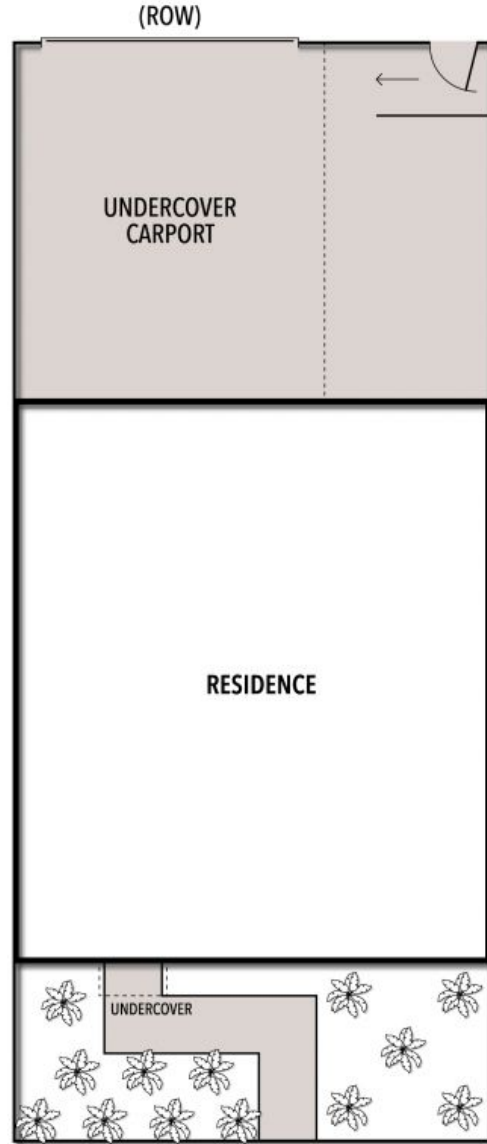
HAYDEN

Ben Smith

0423050825

bens@hayden.com.au

22A BOSTON ROAD, TORQUAY



THE ABOVE PLAN IS AN ARTIST'S IMPRESSION ONLY, IT INCLUDES ELEMENTS THAT ARE FOR DISPLAY PURPOSES ONLY AND MAY NOT BE TO SCALE. LANDSCAPING SHOWN IS INDICATIVE ONLY. DIMENSIONS ARE APPROXIMATE.