



11 Ascent Avenue LEOPOLD, VIC



4



2



2

UNDER CONTRACT

This stunning residence takes fine family living to a whole new level! Showcasing quality fittings, superb entertaining options and an oversized double garage, your dream lifestyle awaits!

From the moment you step inside, you'll love how every inch of this home feels just like new. Bamboo flooring and soaring ceilings enhance the interiors, which have been beautifully designed to capture the natural light. Entertainers will fall in love with the open plan living/dining/kitchen zone, which unites with the sheltered alfresco deck via glass stacker doors. This seamless indoor-outdoor connection provides a sensational setting for relaxed family living and lively gatherings that linger long into the night. From its elevated position, the deck also captures views towards the lake. The cooler months will entice you to snuggle up around the gas log fireplace in the living area, while the adjoining family room boasts direct access to the backyard. The kitchen is perfection with stone benchtops, a large walk-in pantry and stainless steel appliances (dishwasher and 900mm oven, gas co

Price: \$595,000 - \$640,000

Property Type: House

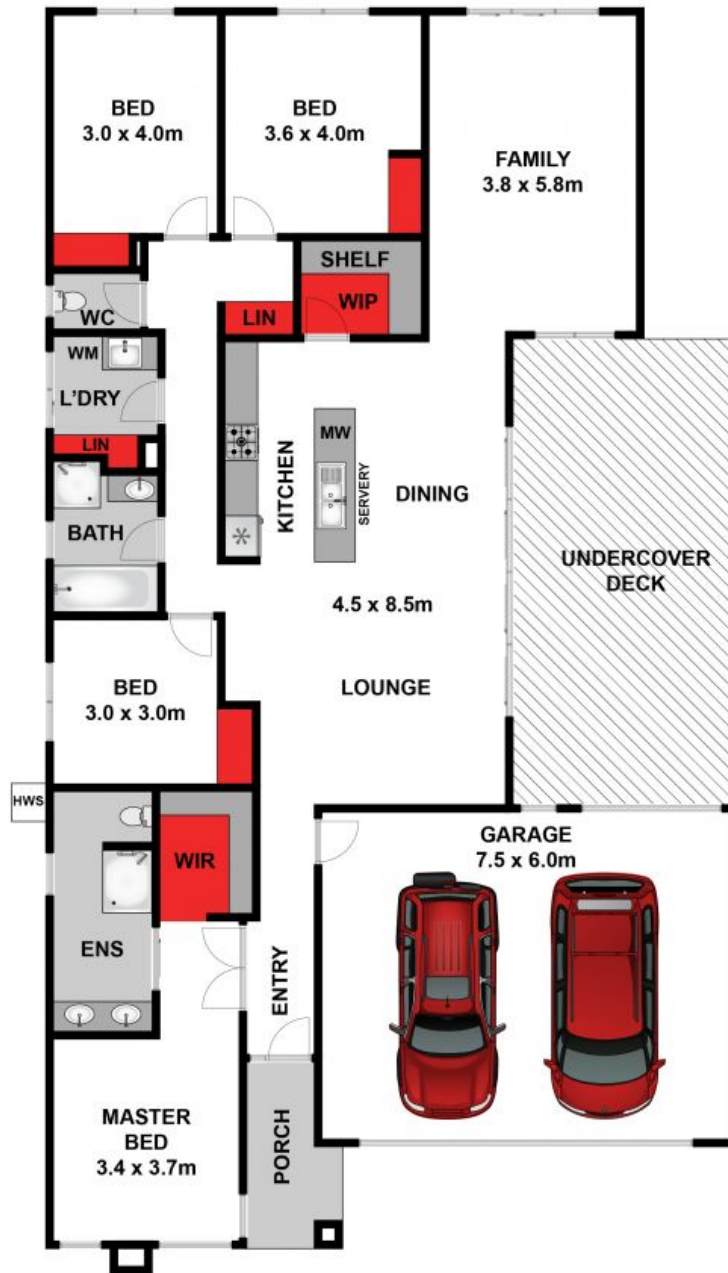
Land: 661 m2

HAYDEN

Karen Purcell

0448510143

karenp@haydenleopold.com.au



Approx House Area 233m²

Whilst bwrn.com.au has made every attempt to ensure the accuracy of the floor plan contained here, measurements are approximate and no responsibility is taken for any error, omission, or mis-statement. This plan is for illustrative purposes only.

11 Ascent Avenue, Leopold

HAYDEN

11 Ascent Avenue

LEOPOLD, VIC