



13 Shoaling Drive LEOPOLD, VIC



3



2



2

## Elegance, Class & Wonderfully Low-Maintenance!

You'll be charmed the moment you lay eyes on this home! Occupying a corner block and surrounded by gorgeous gardens, this is the perfect choice for those seeking a carefree lifestyle!

**Price:** \$499,000 - \$540,000

**Property Type:** House

**Land:** 439 m2

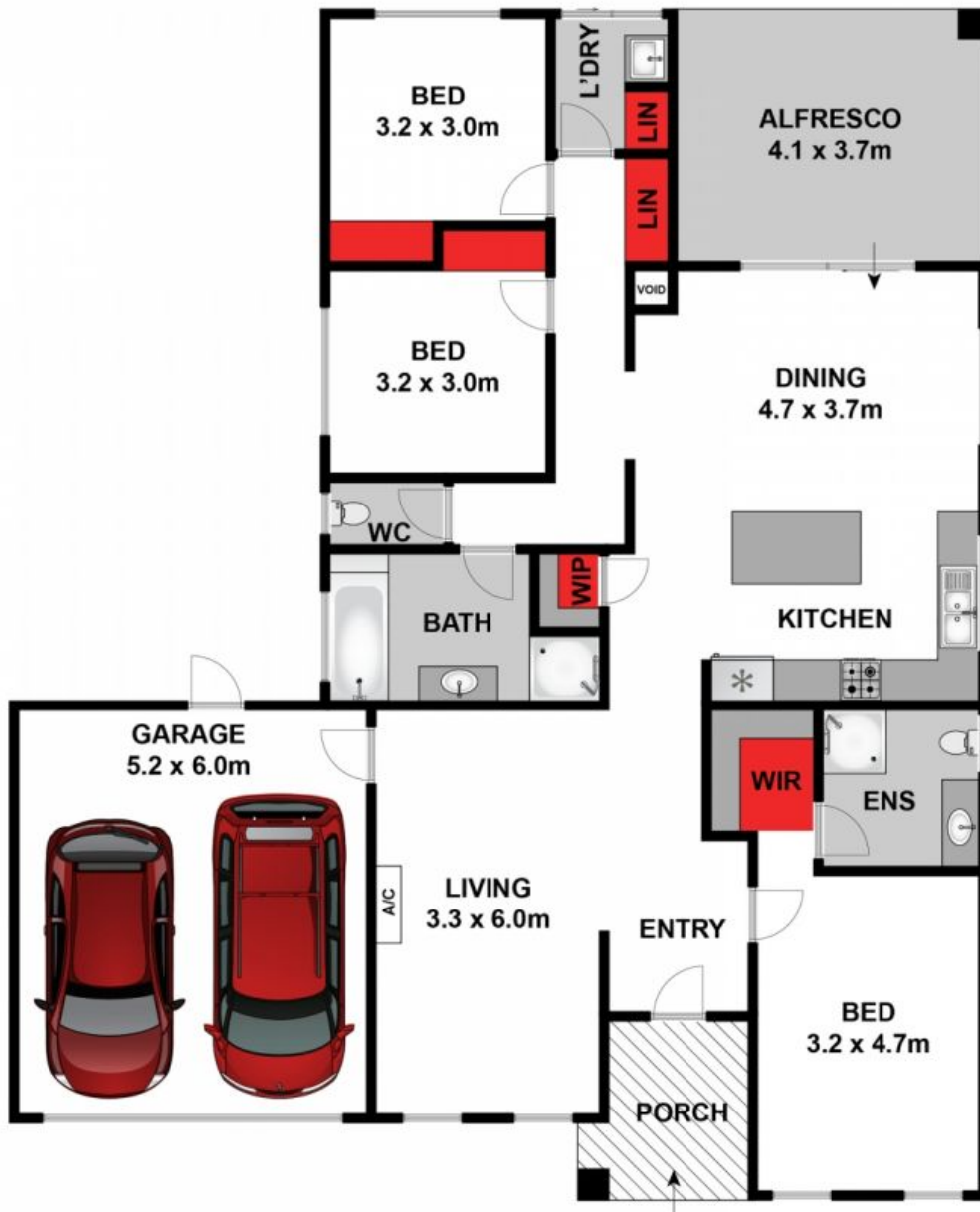
Presenting an ideal choice for downsizers and first homebuyers, this well-loved home will delight! Inspect ASAP!

# HAYDEN

**Karen Purcell**

0448510143

karenp@haydenleopold.com.au



Approx House Area 173m<sup>2</sup>

Whilst [bwrn.com.au](http://bwrn.com.au) has made every attempt to ensure the accuracy of the floor plan contained here, measurements are approximate and no responsibility is taken for any error, omission, or mis-statement. This plan is for illustrative purposes only.



**13 Shoaling Drive, Leopold**

**HAYDEN**

13 Shoaling Drive

LEOPOLD, VIC