

730B Shell Road POINT LONSDALE, VIC



3



1



1

## Relaxed Coastal Opportunity - UNDER CONTRACT

Walking distance to the beach and further opportunity to value add this modernised 3-bedroom family home ticks all the boxes: stylish interiors, a convenient location and low-maintenance surrounds. North-facing open-plan living, this beauty has been updated to reflect the contemporary coastal lifestyle on offer.

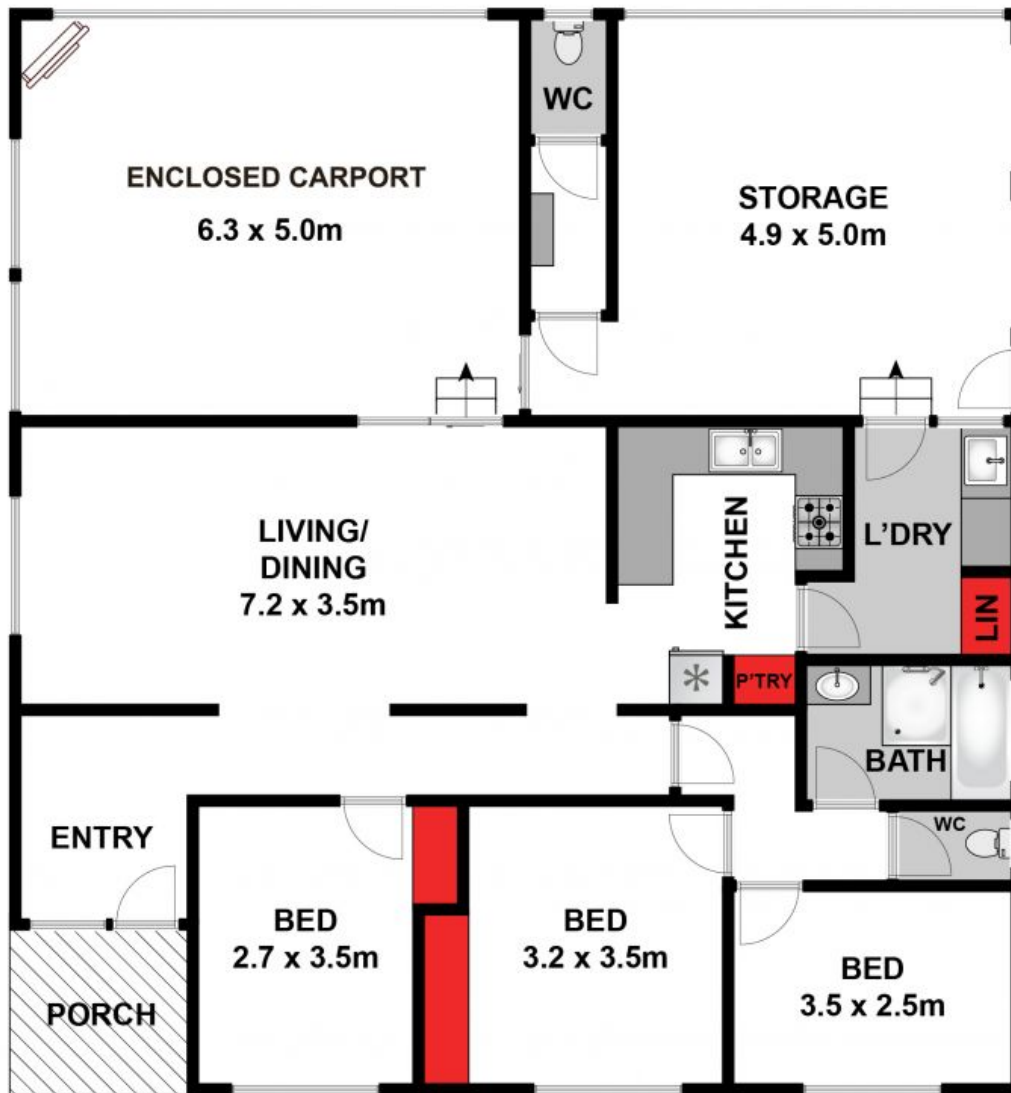
**Price:** \$590,000 - \$645,000  
**Property Type:** House  
**Land:** 444 m<sup>2</sup>

# HAYDEN

**Paul Raicevic**

0434080694

paul@haydenoceanogrove.com.au



Approx House Area 168m<sup>2</sup>

Whilst [bwrn.com.au](http://bwrn.com.au) has made every attempt to ensure the accuracy of the floor plan contained here, measurements are approximate and no responsibility is taken for any error, omission, or mis-statement. This plan is for illustrative purposes only.

**730B Shell Road, Point Lonsdale**

**HAYDEN**

**730B Shell Road**

**POINT LONSDALE, VIC**