



11 Serene Terrace DRYSDALE, VIC



4



2



2

## Stylish Family Living in Idyllic Prized Estate

From the moment you arrive at 11 Serene Terrace and step onto the lush lawn past flourishing ornamental pear trees, there's a sense that something special awaits behind the front door. And indeed there is! Situated in the award winning Central Walk Estate, a boutique development just 200 metres from the town centre, this 4 bedroom home occupies a most desirable position overlooking the attractive wetlands in a family friendly neighbourhood. Upon entering you are welcomed with both warmth and a sense of wow with striking spotted gum flooring throughout the home. A long hallway leads to the open plan design, featuring a stylish and sleek kitchen complete with large caesar stone island bench, walk-in pantry and quality appliances. The home has been thoughtfully designed to provide two separate living zones, providing that sought after second space for the kids. The home also delivers a clever alfresco connection with both living zones opening onto a superb and very spacious north facing entertainment deck, private and protected from the elements, complete with ceiling fan for those hot summer evenings. The master bedroom is extremely spacious and is complemented by a large walk in robe and stylish, spacious ensuite with twin vanities. The remaining 3 generous sized bedrooms all have built in robes and share a central

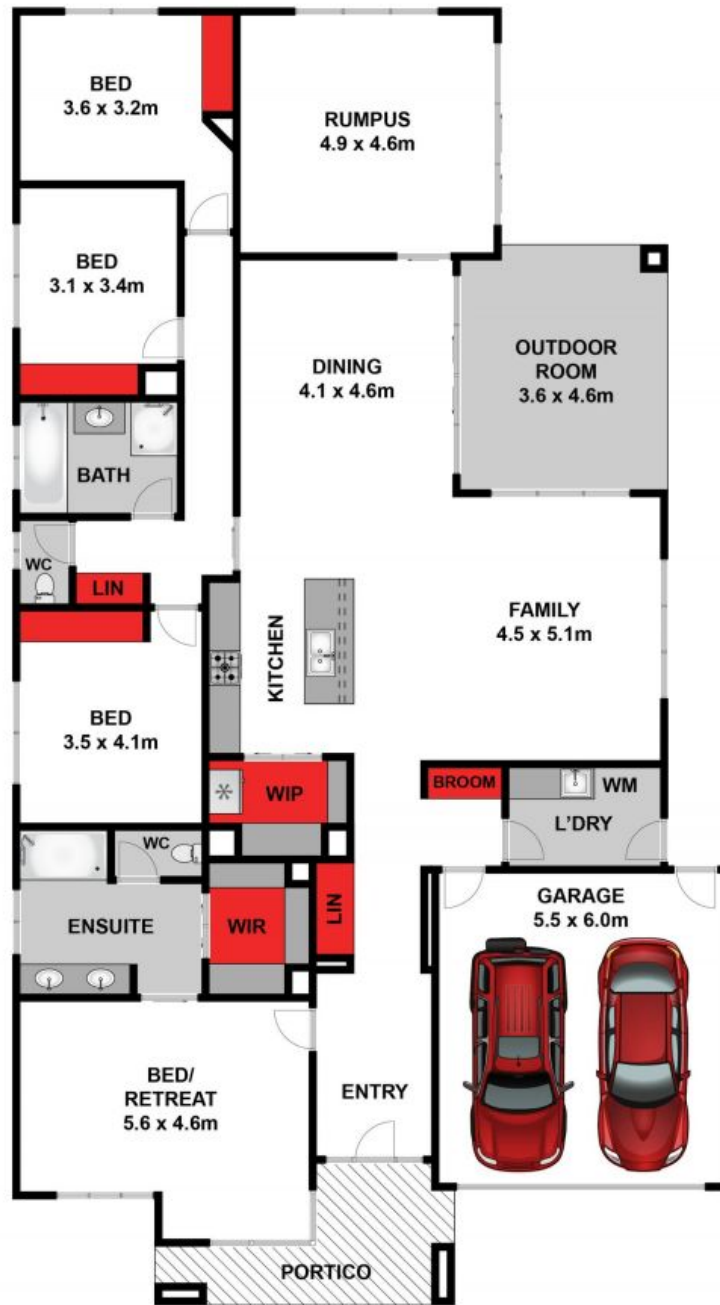
**Price:** \$700,000 - \$770,000  
**Property Type:** House  
**Land:** 656 m2

HAYDEN

**Hugh McKewan**

0417538779

[hugh@haydenoceanogrove.com.au](mailto:hugh@haydenoceanogrove.com.au)



Whilst [bwrn.com.au](http://bwrn.com.au) has made every attempt to ensure the accuracy of the floor plan contained here, measurements are approximate and no responsibility is taken for any error, omission, or mis-statement. This plan is for illustrative purposes only.

## 11 Serene Terrace, Drysdale

**HAYDEN**