



4 Tamar Court LEOPOLD, VIC



4



2



2

A Leopold Gem On An Impressive 849m2!

Nestled in a quiet court upon an impressive. 849m2 (approx.), this family residence presents spacious living both inside and out!

Positioned within walking distance to the Dorothy Street shops, Allanvale Preschool and Leopold P.S, the elements are in place for a carefree lifestyle. Public transport is also within walking distance, while sporting grounds and the Gateway Plaza are moments away. The Bellarine Highway keeps you connected to both Geelong and the Bellarine Peninsula.

The interiors invite you to move straight in or update with your own personal touch (STCA). A wood heater creates a cosy ambience in the front living/dining zone, while the kitchen/meals area flows onto the sheltered alfresco. Positioned under the mature Liquid Amber tree, you'll love spending your days in the shade of the alfresco as the kids play in the gorgeous backyard. The kitchen is well equipped with a built-in pantry, dishwasher, oven and

Price: \$495,000 - \$540,000

Property Type: House

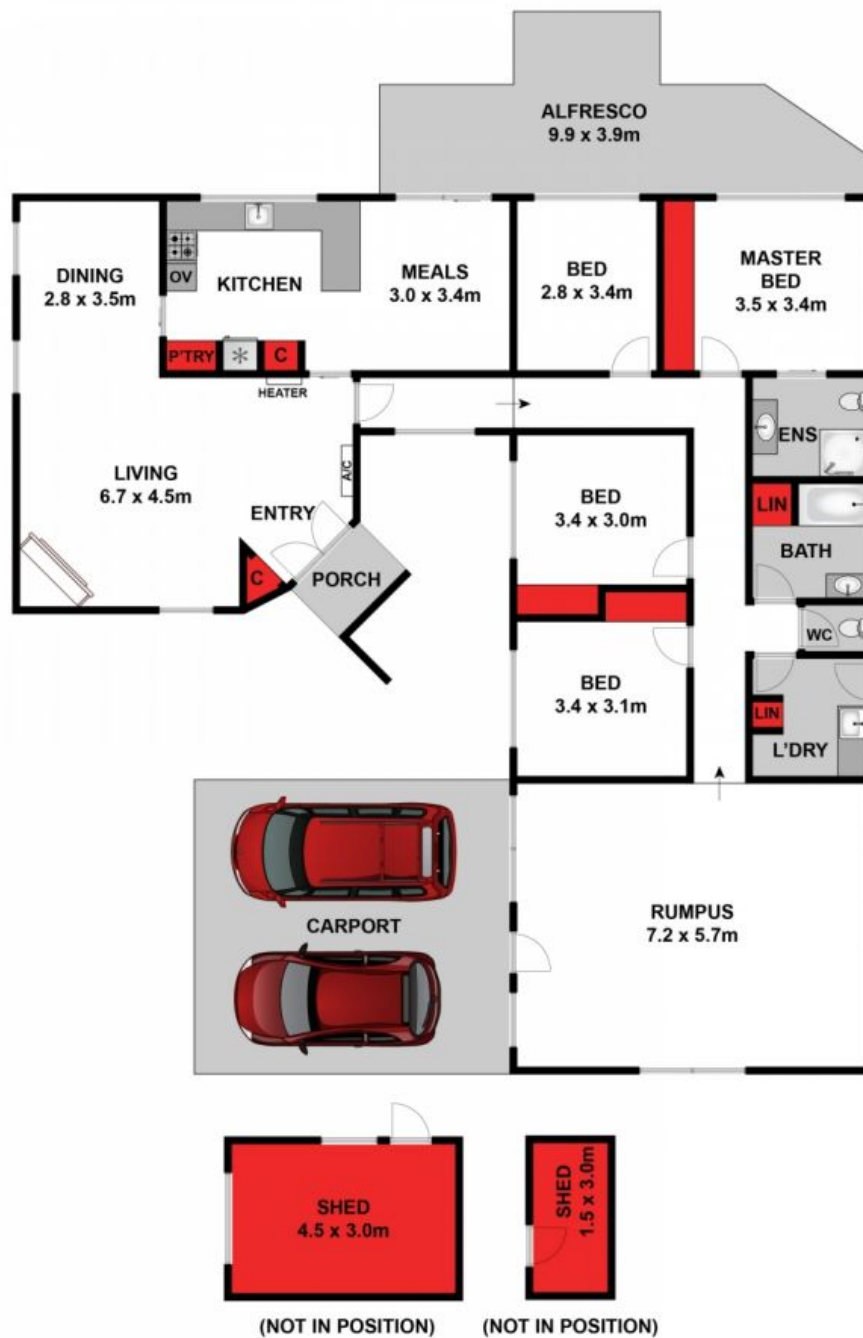
Land: 849 m2

HAYDEN

Karen Purcell

0448510143

karenp@haydenleopold.com.au



Approx House Area 197m²

Whilst bwrn.com.au has made every attempt to ensure the accuracy of the floor plan contained here, measurements are approximate and no responsibility is taken for any error, omission, or mis-statement. This plan is for illustrative purposes only.

4 Tamar Court, Leopold

HAYDEN

4 Tamar Court

LEOPOLD, VIC