



1/11 Elizabeth Street ST ALBANS PARK, VIC



2



1

Two-BR Abode In Ideal Location

Whether you're a first homebuyer, savvy investor, or have plans to put your own stamp on the property (STCA), you'll need to act quickly to avoid disappointment!

Price: \$385,000 - \$420,000

Property Type: House

Land: 369 m2

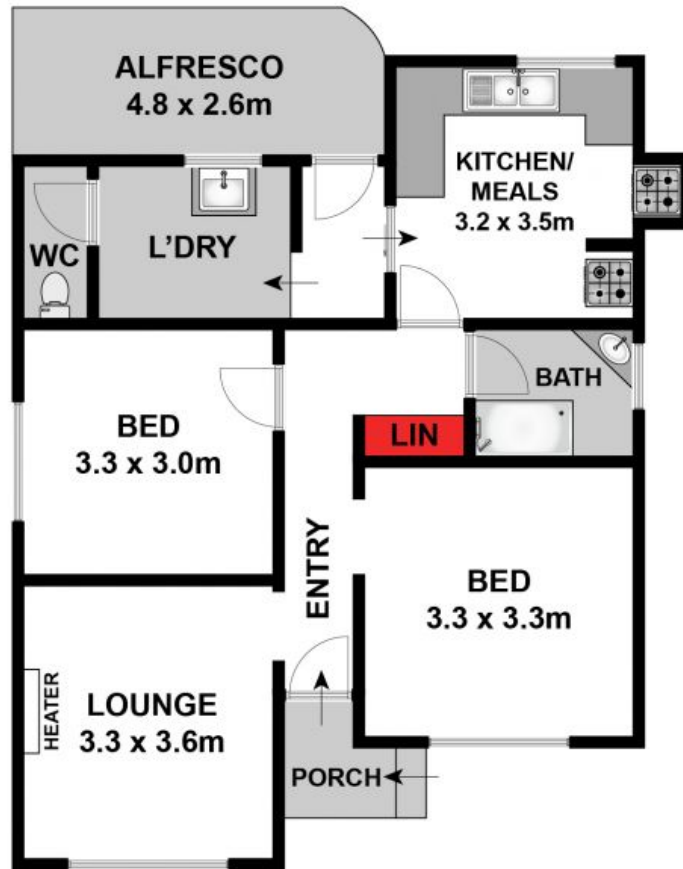
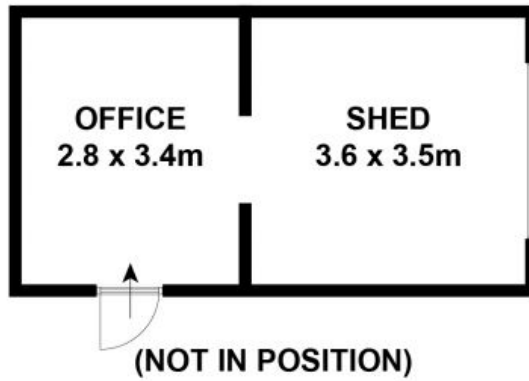
You'll need to act quickly to snap up this property! Inspect ASAP!

HAYDEN

Karen Purcell

0448510143

karenp@haydenleopold.com.au



Approx House Area 66m²

Whilst bwr.com.au has made every attempt to ensure the accuracy of the floor plan contained here, measurements are approximate and no responsibility is taken for any error, omission, or mis-statement. This plan is for illustrative purposes only.

1/11 Elizabeth Street, St Albans Park

HAYDEN

1/11 Elizabeth Street

ST ALBANS PARK, VIC