



DISCLAIMER: This drawing is indicative only & all measurements are approximate.



16 Anchorage Way LEOPOLD, VIC



3



2



2

### A Family Retreat

If you're dreaming of owning your own home or looking for the perfect place to raise your family, then this is the one for you! This Boutique Homes residence promises a carefree lifestyle!

Ideally set in a family-friendly neighbourhood, this location places you within walking distance to the local playground and sporting grounds. Public transport is also a short stroll away, while the Gateway Plaza and Leopold P.S. are within close reach. Easy access to both Lake Connewarre and the Gateway Sanctuary will inspire you to venture outdoors.

The floorplan will impress with generous proportions featured throughout. Natural light sweeps through the open plan living/dining/kitchen zone, which creates plenty of space for the whole family to enjoy. The kitchen showcases stone benchtops, a dishwasher, and 900mm stainless steel cooking appliances (oven, gas cooktop, canopy rangehood). The built-in pant

**Price:** \$540,000 - \$570,000  
**Property Type:** House  
**Land:** 448 m2



**Karen Purcell**

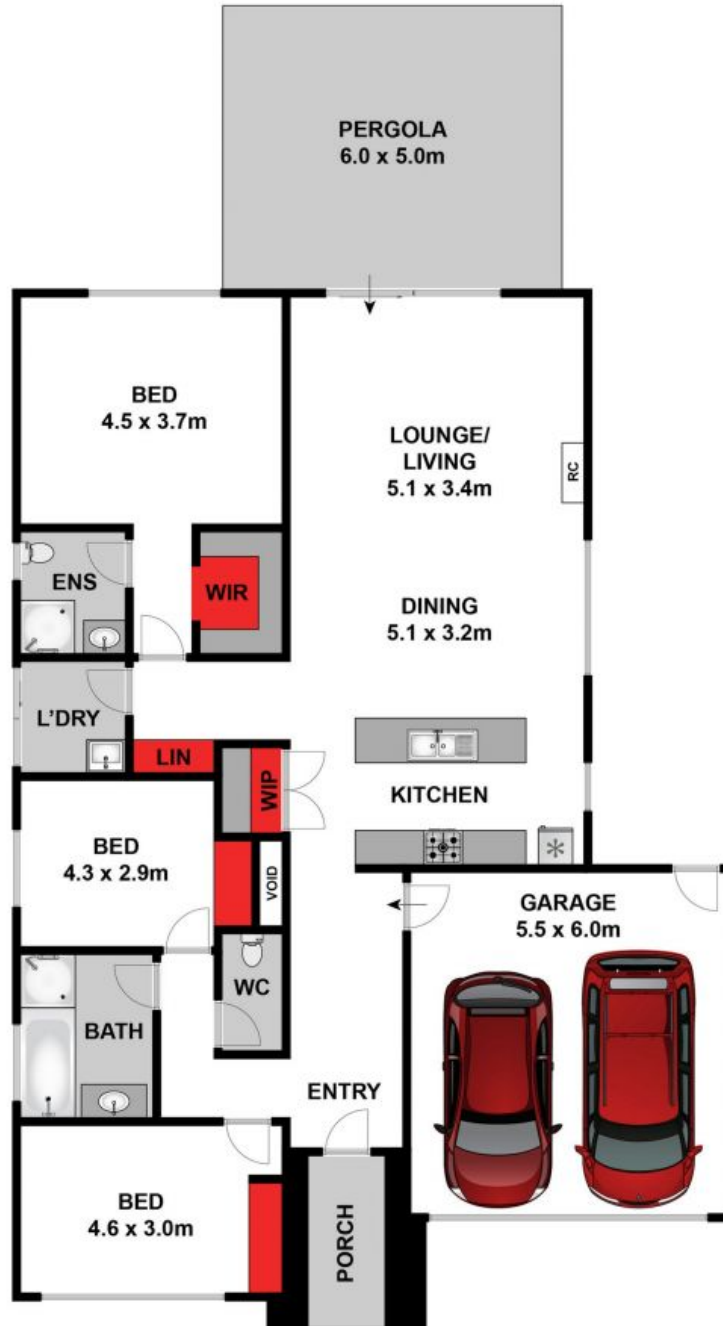
0448510143

karenp@haydenleopold.com.au

**Robyn Grumley**

0448510134

robyn@haydenleopold.com.au



Whilst [bwrn.com.au](http://bwrn.com.au) has made every attempt to ensure the accuracy of the floor plan contained here, measurements are approximate and no responsibility is taken for any error, omission, or mis-statement. This plan is for illustrative purposes only.

**16 Anchorage Way, Leopold**

**HAYDEN**

**16 Anchorage Way**

**LEOPOLD, VIC**