



28 Nicholson Crescent JAN JUC, VIC



4



1



1

## Surf Coast Hottest Spot

Quietly tucked away from the crowds and yet so close to the beach, parks and shops, this may well be one of the best locations in Jan Juc. Combined with a cedar weatherboard beach home packed with charm, this is a property to get excited about.

The 597m<sup>2</sup> (approx) corner allotment features established native trees while the neighbouring reserve creates a private backdrop. A carport and off-street parking are included.

**Price:** Auction: Sat 13th Mar @ 11:00am  
**Property Type:** House  
**Land:** 598 m<sup>2</sup>

# HAYDEN

Hayden Real Estate Ben Smith

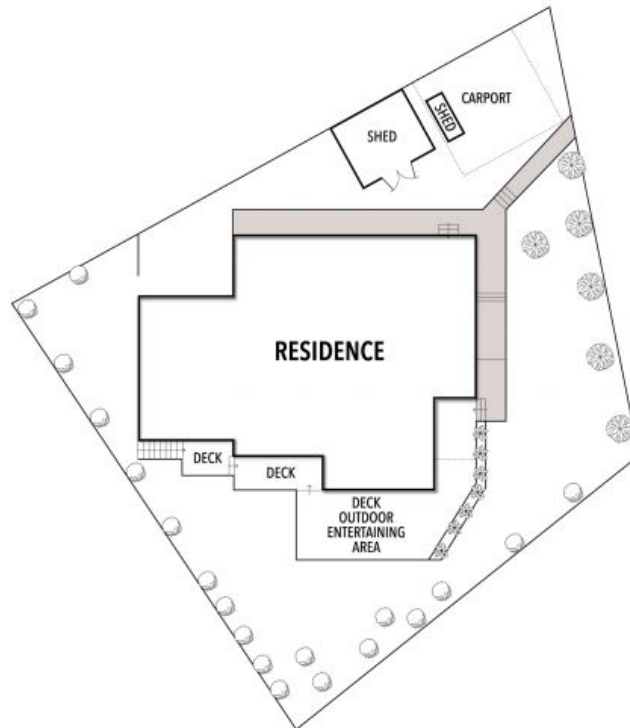
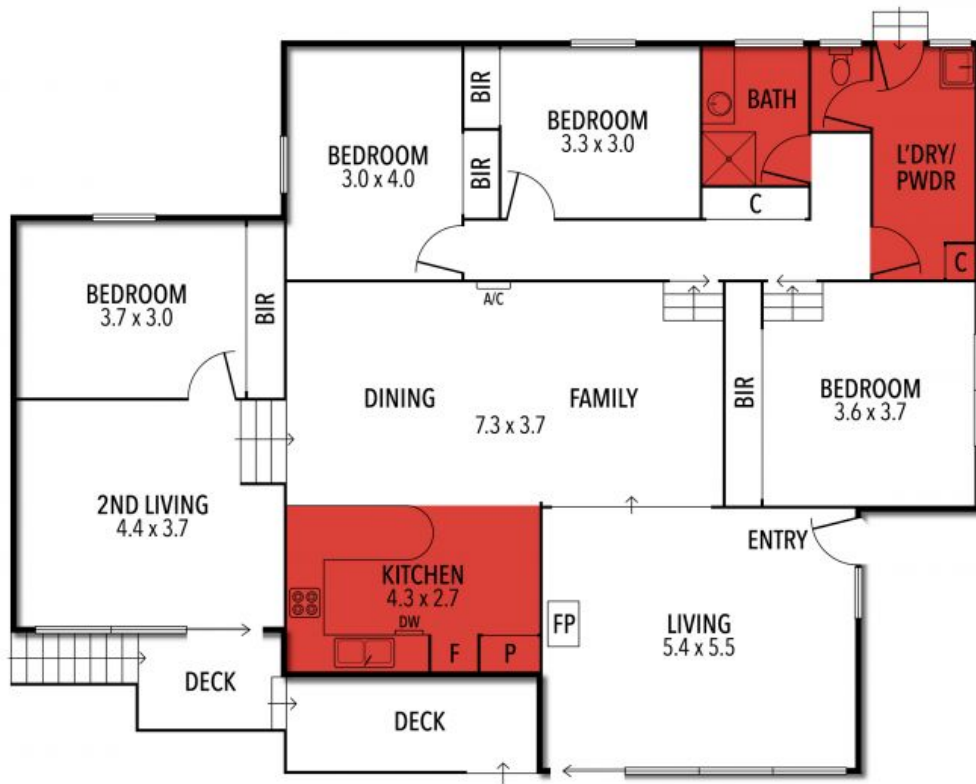
0423050825

Torquay

samh@hayden.com.au

bens@hayden.com.au

## 28 NICHOLSON CRESCENT, JAN JUC



THE ABOVE PLAN IS AN ARTIST'S IMPRESSION ONLY, IT INCLUDES ELEMENTS THAT ARE FOR DISPLAY PURPOSES ONLY AND MAY NOT BE TO SCALE. LANDSCAPING SHOWN IS INDICATIVE ONLY. DIMENSIONS ARE APPROXIMATE.