



5 Everglade Street LEOPOLD, VIC



4



2



2

Low-Maintenance Living With Oh-So-Much Space!

This residence presents the ultimate fusion of spacious and low-maintenance living!

Price: \$540,000 - \$580,000

Property Type: House

Land: 375 m2

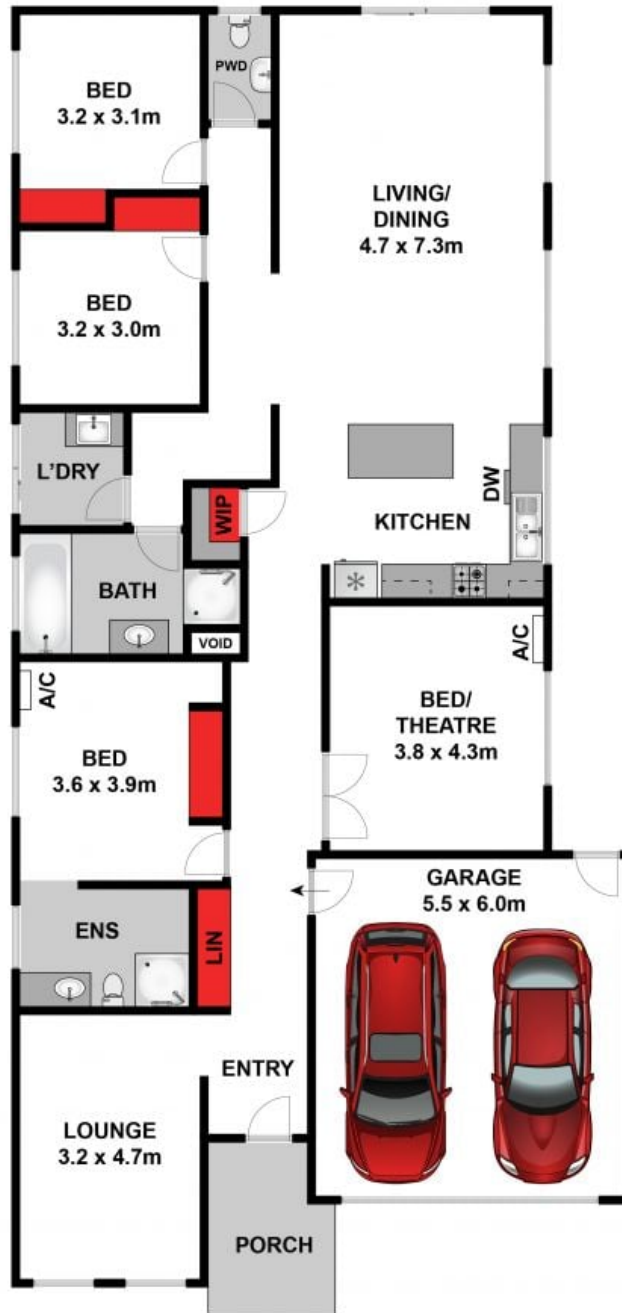
Whether you're a first homebuyer, family or investor, this property will impress! Inspect without delay!

HAYDEN

Karen Purcell

0448510143

karenp@haydenleopold.com.au



Whilst bwrn.com.au has made every attempt to ensure the accuracy of the floor plan contained here, measurements are approximate and no responsibility is taken for any error, omission, or mis-statement. This plan is for illustrative purposes only.

5 Everglade Street, Leopold

HAYDEN

5 Everglade Street

LEOPOLD, VIC