



1 C Dunsford Drive LEOPOLD, VIC



3



1



1

Approx. 780m2 of Pure Potential!

Set upon approx. 782m2, this property is overflowing with infinite potential! Whether you have plans to renovate, develop, or wipe the slate clean to build your dream family home, this is the one for you (STCA)!

Price: \$495,000 - \$540,000

Property Type: House

Land: 782 m2

Don't miss this opportunity to make your mark in Leopold! Inspect ASAP!

HAYDEN

Karen Purcell

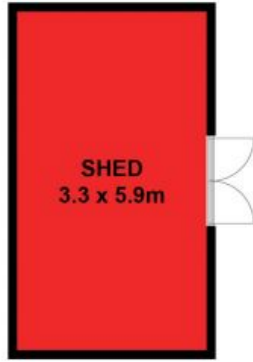
0448510143

karenp@haydenleopold.com.au

Robyn Grumley

0448510134

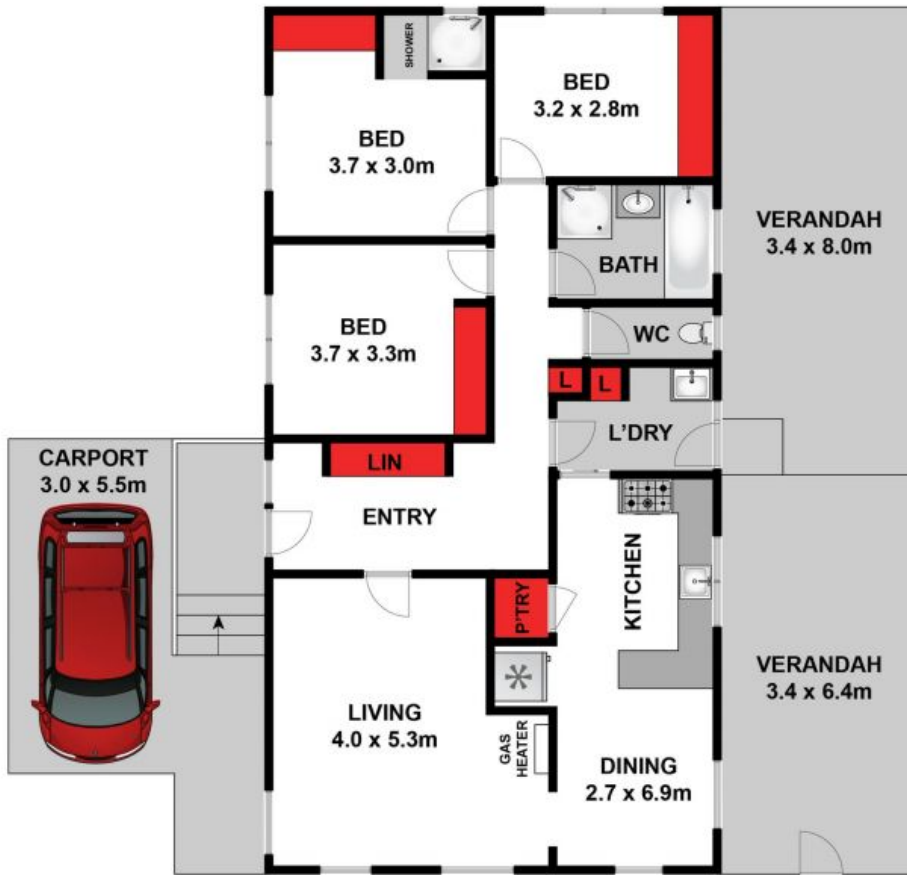
robyn@haydenleopold.com.au



(NOT IN POSITION)



(NOT IN POSITION)



Approx House Area 116m²

Whilst bwrn.com.au has made every attempt to ensure the accuracy of the floor plan contained here, measurements are approximate and no responsibility is taken for any error, omission, or mis-statement. This plan is for illustrative purposes only.



1C Dunsford Drive, Leopold

HAYDEN

1 C Dunsford Drive

LEOPOLD, VIC