



36 Island Drive TORQUAY, VIC



3



2



2

## Elegance, Grace And Style

Step back in time to an era where refined style, elegance and quality were on trend. This property, with its Federation style and period features, will take you there.

Further features include polished timber floors, led-light windows, ornate cornices and ceiling roses as well as ducted heating throughout. An oversize double garage with internal access boasts a substantial workshop area.

**Price:** \$1,100,000

**Property Type:** House

**Land:** 801 m2

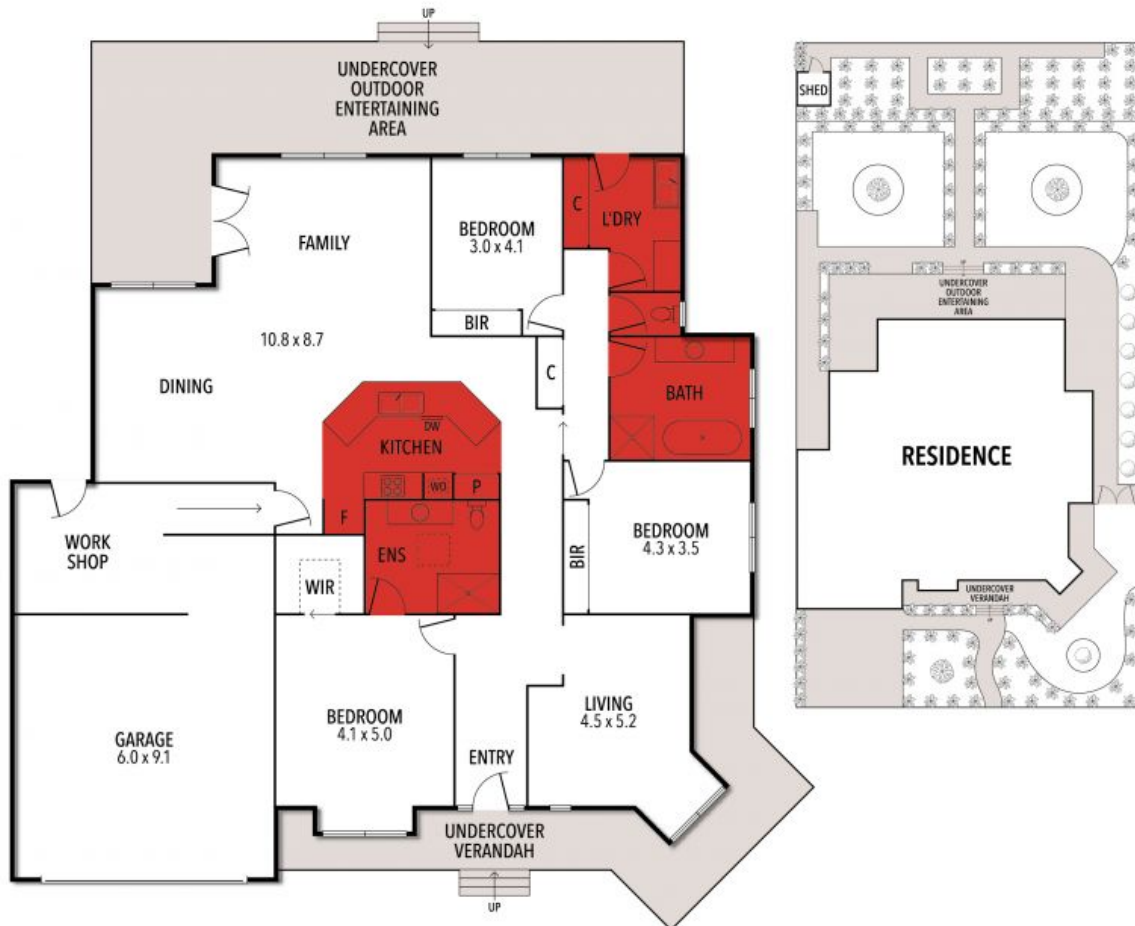
# HAYDEN

**Ben Smith**

0423050825

bens@hayden.com.au

# 36 ISLAND DRIVE, TORQUAY



THE ABOVE PLAN IS AN ARTIST'S IMPRESSION ONLY, IT INCLUDES ELEMENTS THAT ARE FOR DISPLAY PURPOSES ONLY AND MAY NOT BE TO SCALE. LANDSCAPING SHOWN IS INDICATIVE ONLY. DIMENSIONS ARE APPROXIMATE.