



8 Washington Gardens LEOPOLD, VIC



5



3



5

Dreaming Of Spacious Living Both Inside & Out?

Occupying an impressive 1806m2 (approx.), this spacious home ticks every box for superb family living!

Ideally positioned in a prized pocket of Leopold, this location will leave you wanting nothing. Public transport is footsteps away, while a short stroll will find you at the local milkbar and Leopold Sportsmans Club. Easy access to Leopold P.S and Gateway Plaza puts the practical elements in place, while the Portarlington Highway grants easy access to both Geelong and the Bellarine Peninsula.

With nothing left to do except move in and enjoy, this updated home is the perfect choice for families looking to instantly elevate their lifestyle. The spacious lounge/dining zone welcomes you inside, while the open plan living/dining/kitchen zone creates the lively hub of the home. The kitchen will impress modern families with stone benchtops, a built-in pantry and quality stainless steel appliances (Siemens oven, induction cooktop, rangehood,

Price: \$930,000 - \$980,000

Property Type: House

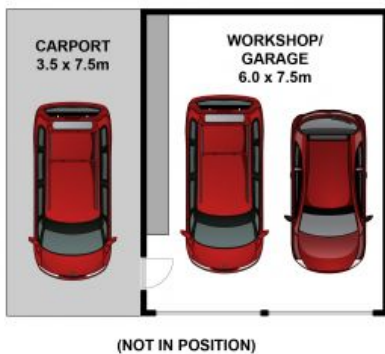
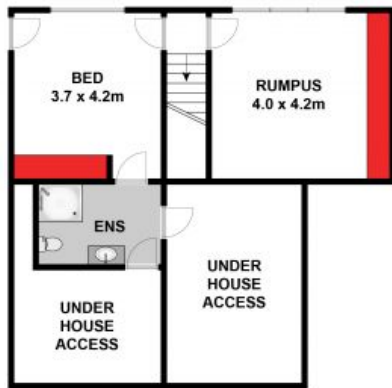
Land: 1806 m2

HAYDEN

Karen Purcell

0448510143

karenp@haydenleopold.com.au



Whilst bwrn.com.au has made every attempt to ensure the accuracy of the floor plan contained here, measurements are approximate and no responsibility is taken for any error, omission, or mis-statement. This plan is for illustrative purposes only.

8 Washington Gardens, Leopold

HAYDEN

8 Washington Gardens

LEOPOLD, VIC