



30 Leicester Mews LEOPOLD, VIC



3



2



2

A Family Treasure In A Peaceful Pocket of Leopold!

Nestled in a peaceful court, this treasured home promises a blissful family lifestyle!

This prized pocket of Leopold places you within walking distance to public transport and the Ash Road shops. The Leopold P.S. and Gateway Plaza are conveniently close by, along with sporting grounds and the Leopold Community Hub. The Bellarine Highway keeps you connected to both Geelong and the Bellarine Peninsula, filling your weekends with new adventures.

With the interiors in immaculate condition, it's easy to see that this one-owner home has been well-loved over the years. The front lounge opens onto the generous balcony, where you can admire a tranquil outlook over the neighbourhood's mature trees. The open plan living/dining/kitchen zone creates the perfect setting for the whole family to come together, w

Price: \$620,000 - \$680,000

Property Type: House

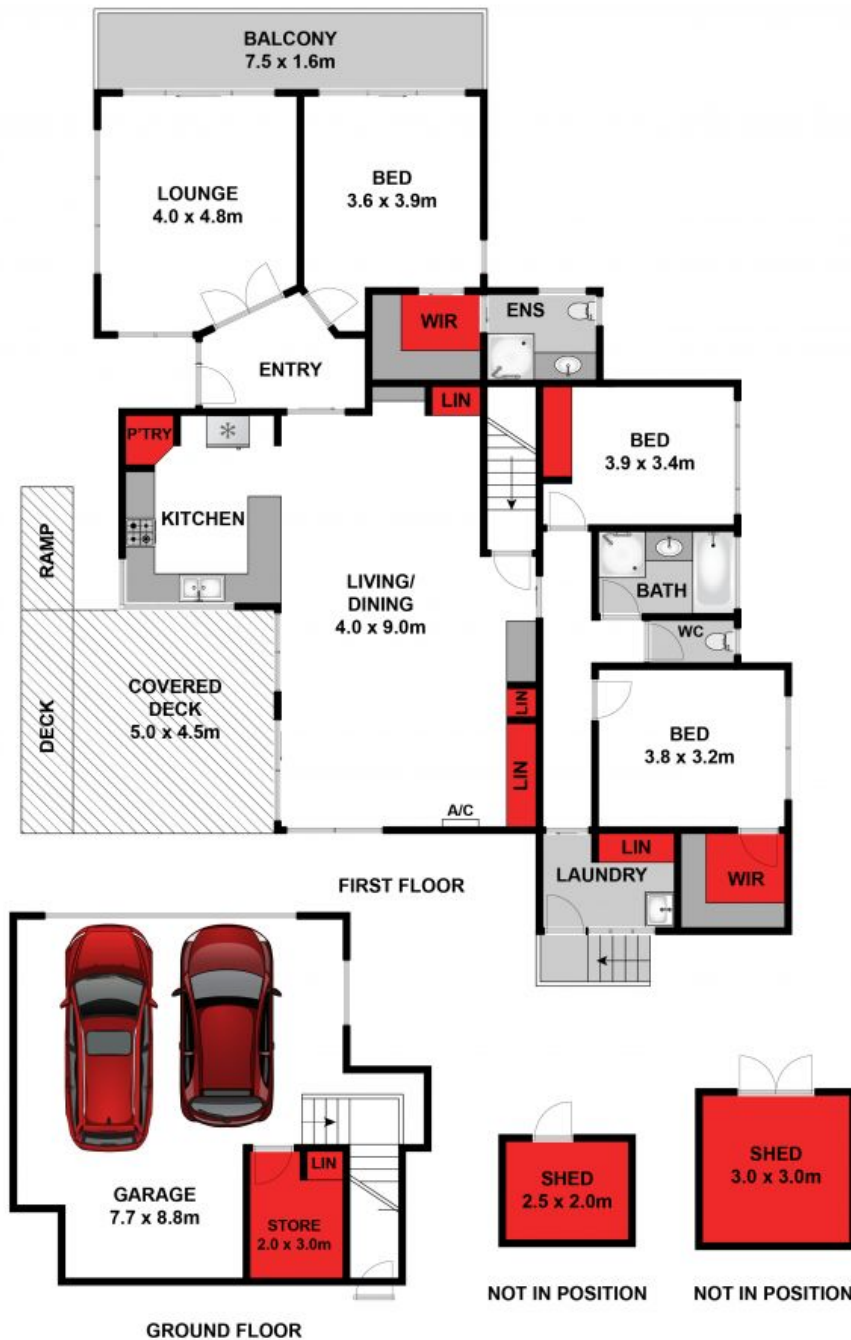
Land: 802 m2

HAYDEN

Karen Purcell

0448510143

karenp@haydenleopold.com.au



Approx House Area 218m²

Whilst bwr.com.au has made every attempt to ensure the accuracy of the floor plan contained here, measurements are approximate and no responsibility is taken for any error, omission, or mis-statement. This plan is for illustrative purposes only.



30 Leicester Mews, Leopold

HAYDEN

30 Leicester Mews

LEOPOLD, VIC