



2/2 Robbie Court LEOPOLD, VIC



2



1



1

## The Perfect First Home or Downsizer!

Have you been dreaming of low-maintenance living but don't want to compromise on space? Boasting generous proportions and a charming courtyard, this is the one you've been waiting for!

Home to lush lawn and a stunning lemon tree, the courtyard provides a beautiful outdoor setting. The paved alfresco entices you to relax, while buyers will also see the potential in creating side access to this area to accommodate boat or caravan storage. The remote single lock-up garage provides secure parking.

With so much to offer, this property won't last long! Inspect without delay!

**Price:** \$420,000 - \$460,000

**Property Type:** Unit

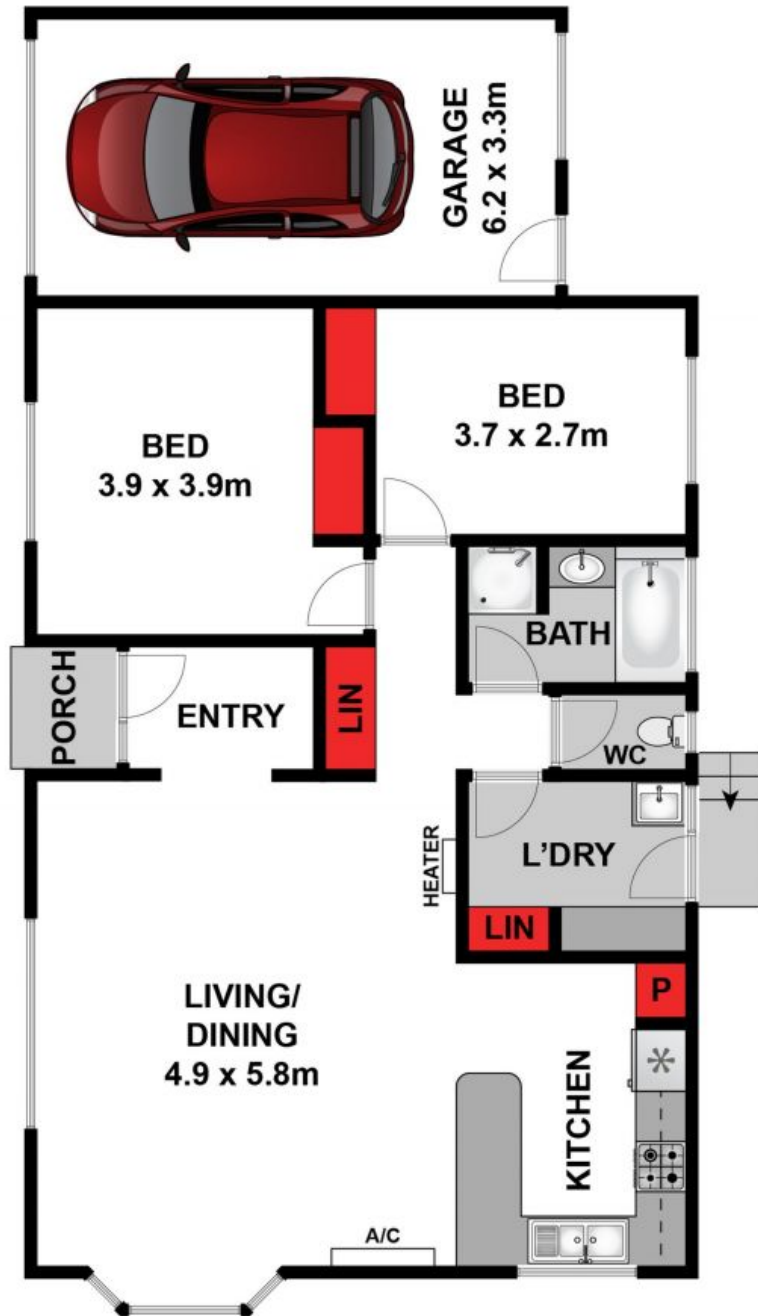
**Land:** 388 m2

# HAYDEN

**Karen Purcell**

0448510143

karenp@haydenleopold.com.au



Whilst [bwrn.com.au](http://bwrn.com.au) has made every attempt to ensure the accuracy of the floor plan contained here, measurements are approximate and no responsibility is taken for any error, omission, or mis-statement. This plan is for illustrative purposes only.

**2/2 Robbie Court, Leopold**

**HAYDEN**

**2/2 Robbie Court**

**LEOPOLD, VIC**