



6A Piper Lane TORQUAY, VIC



4



2



2

Picturesque Home With Deep Creek Reserve Frontage

Set on 4,500sqm of some of Torquay's most picturesque land abutting the Deep Creek Reserve, this property offers the best of both worlds. Country living in a private court location, within walking distance of boardwalks, parkland and only minutes' walk to local schools, sporting facilities and shops.

Price: \$1,950,000
Property Type: House
Land: 4500 m2



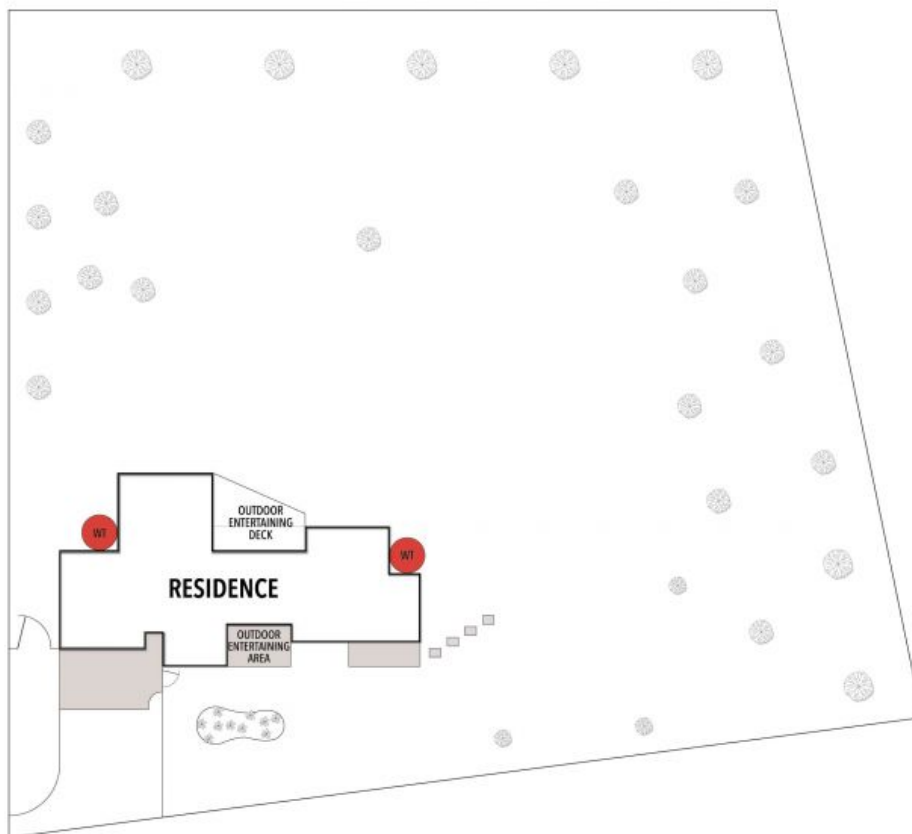
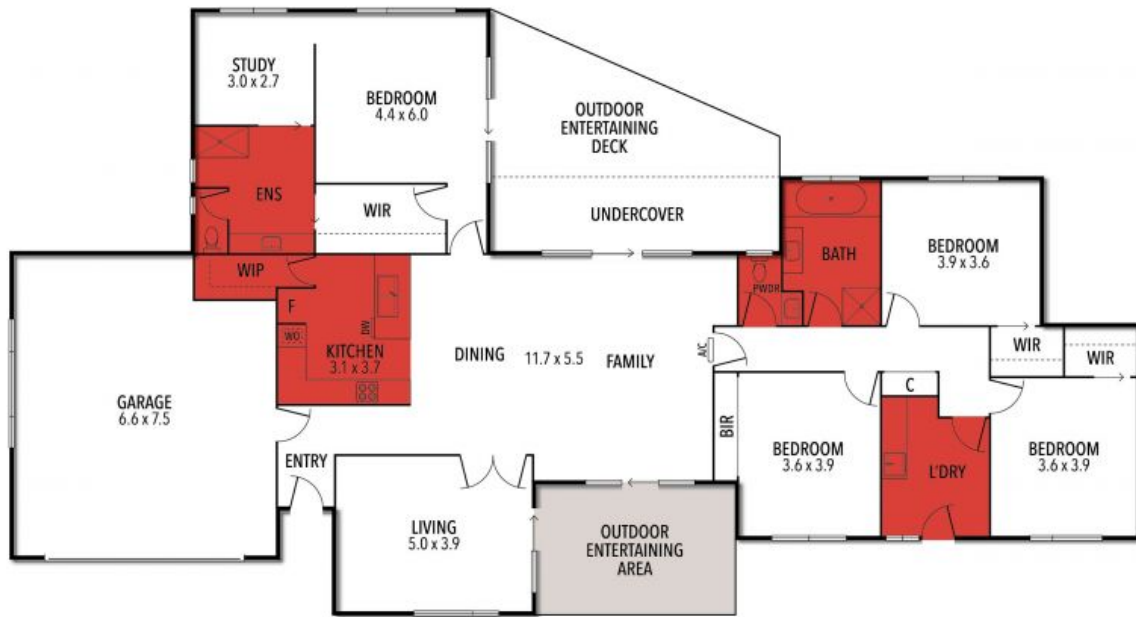
Hayden Real Estate Ben Smith

0423050825

Torquay
 samh@hayden.com.au

bens@hayden.com.au

6A PIPER LANE, TORQUAY



THE ABOVE PLAN IS AN ARTIST'S IMPRESSION ONLY, IT INCLUDES ELEMENTS THAT ARE FOR DISPLAY PURPOSES ONLY AND MAY NOT BE TO SCALE. LANDSCAPING SHOWN IS INDICATIVE ONLY. DIMENSIONS ARE APPROXIMATE.