



53 Hoddle Drive LEOPOLD, VIC



4



2



2

Family Living At Its Finest!

Have you been dreaming of spacious family living? Showcasing immaculate interiors, three living zones and a generous backyard, this home promises to make your dreams a reality!

Children will love playing in the open parkland and playground, which is an instant from the front door. Public transport is also a short stroll away, while Leopold Primary School and the Gateway Plaza are within easy reach. To top it all off, the Portarlington Highway grants easy access to both Geelong and the Bellarine Peninsula.

Featuring generous proportions throughout, this home is the perfect choice for growing families. The elegant lounge inspires relaxation, while the open plan living/dining/kitchen zone unites with the sheltered deck for beautiful entertaining options. Complete with caf? blinds, this outdoor area creates the perfect setting for year-round enjoyment. Double sliding doors open onto the family room, which offers immense versatility as a billiards room

Price: \$740,000 - \$790,000
Property Type: House
Land: 648 m2



Karen Purcell

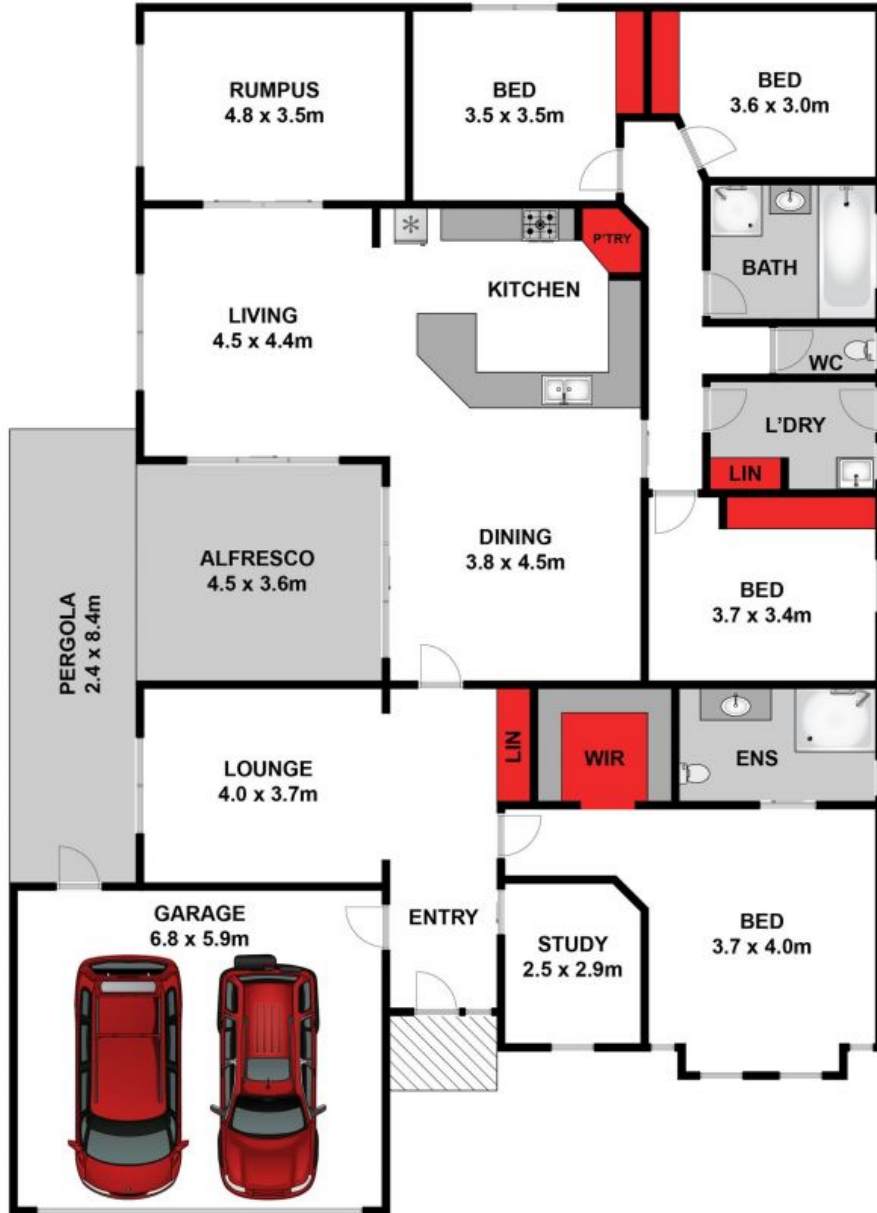
0448510143

karenp@haydenleopold.com.au

Robyn Grumley

0448510134

robyn@haydenleopold.com.au



Approx House Area 273m²

Whilst bwrn.com.au has made every attempt to ensure the accuracy of the floor plan contained here, measurements are approximate and no responsibility is taken for any error, omission, or mis-statement. This plan is for illustrative purposes only.



53 Hoddle Drive, Leopold

HAYDEN

53 Hoddle Drive

LEOPOLD, VIC